

LinMot®

P01-23x80

Import Belgium & Luxembourg

Profilex s.a.

4A, Z.I. In den Allern Tel: 00352/99 89 06
L-9911 Troisvierges Fax: 00352/26 95 73 73

www.profilex-systems.com

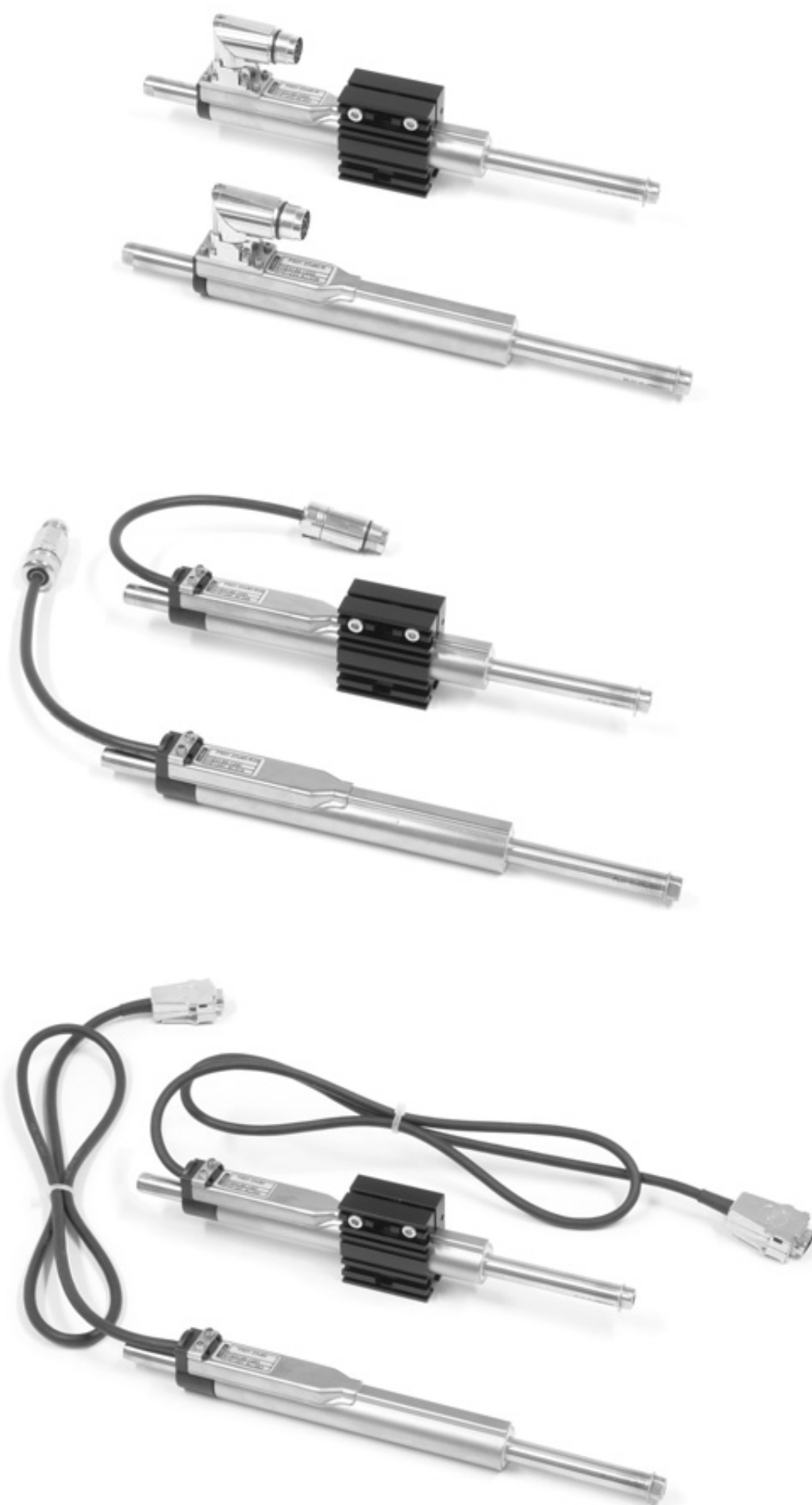
profilex@pt.lu



The linear motor technology for industrial applications

Notes :

[illegible]



P01-23x80/10x50	60
-----------------	----

P01-23x80/30x90	62
-----------------	----

P01-23x80/50x110	64
------------------	----

P01-23x80/80x140	66
------------------	----

P01-23x80/150x210	68
-------------------	----

P01-23x80/210x270	70
-------------------	----

P01-23x80/280x340	72
-------------------	----

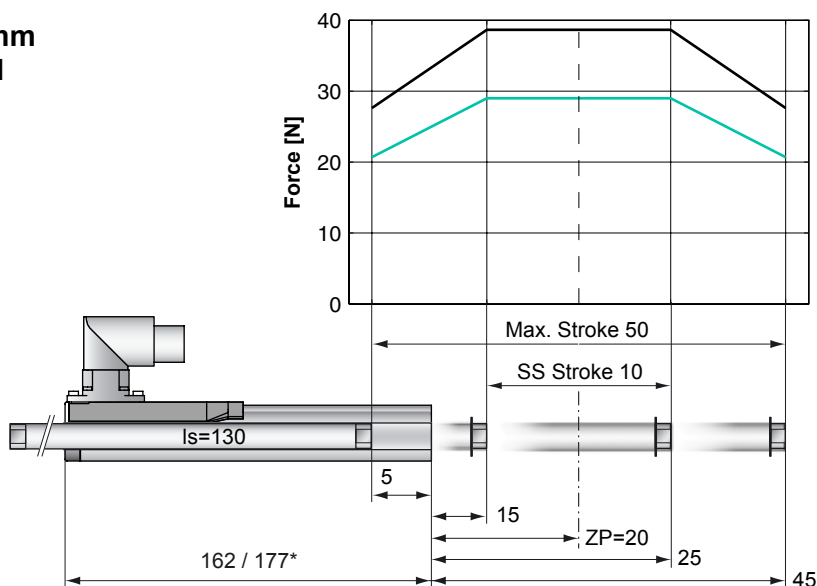
P01-23x80/340x400	74
-------------------	----

P01-23x80/440x500	76
-------------------	----

P01-23x80/620x680	78
-------------------	----

P01-23x80/710x770	80
-------------------	----

Max. Stroke: 50mm
Peak Force: 39N



Standard Winding:

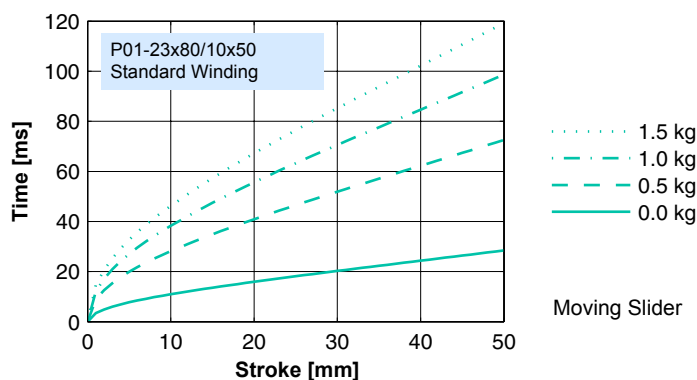
— E1100, 72VDC &
E1001, 72VDC
— E100, 48VDC

Dimensions in mm
*Cable Type

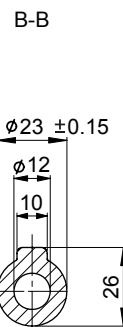
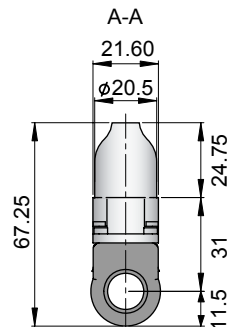
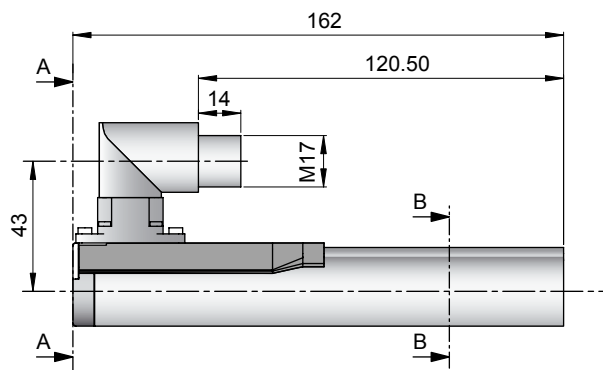
Motor Specification

P01-		Connector Type	Cable Type
		23x80/10x50-R	23x80/10x50 23x80/10x50-R20
Stroke Max.	mm (in)	50 (1.97)	50 (1.97)
Stroke SS	mm (in)	10 (0.39)	10 (0.39)
Peak Force E1100 / E1001	N (lbf)	39 (8.7)	39 (8.7)
Peak Force E100	N (lbf)	29 (6.5)	29 (6.5)
Cont. Force	N (lbf)	8 (1.7)	8 (1.7)
Cont. Force Fan cooling	N (lbf)	14 (3.2)	14 (3.2)
Border Force	%	71	71
Force Constant	N/A (lbf/A)	9.7 (2.17)	9.7 (2.17)
Max. Current @ 72VDC	A	4.0	4.0
Max. Current @ 48VDC	A	3.8	3.8
Max. Velocity @ 72VDC	m/s (in/s)	6.9 (270)	6.9 (270)
Max. Velocity @ 48VDC	m/s (in/s)	4.6 (180)	4.6 (180)
Phase Resist. 25/80 °C	Ohm	10.3/12.5	10.3/12.5
Phase Inductance	mH	1.4	1.4
Thermal Resistance	°K/W	7.0	7.0
Thermal Time Const.	sec	1600	1600
Stator Diameter	mm (in)	23 (0.91)	23 (0.91)
Stator Length	mm (in)	162 (6.38)	177 (6.97)
Stator Mass	g (lb)	265 (0.58)	265 (0.58)
Slider Diameter	mm (in)	12 (0.47)	12 (0.47)
Slider Length	mm (in)	130 (5.12)	130 (5.12)
Slider Mass	g (lb)	89 (0.20)	89 (0.20)
Position Repeatability	mm (in)	±0.05 (±0.0020)	±0.05 (±0.0020)
Linearity	%	±0.70	±0.70
Position Rep. with ES	mm (in)	±0.01 (±0.0004)	±0.01 (±0.0004)
Linearity with ES	mm (in)	±0.01 (±0.0004)	±0.01 (±0.0004)

Position-Time Diagram

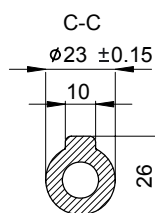
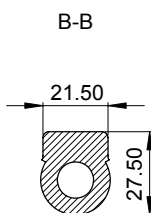
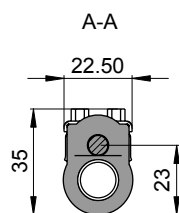
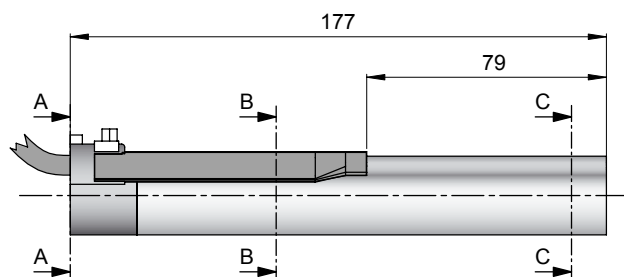


Connector Type



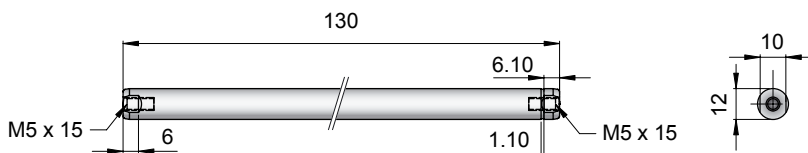
Linear Motor		Stator		Slider	
Type	Art.No	Type	Art. No.	Type	Art No.
P01-23x80/10x50-R	-->	PS01-23x80-R	0150-1233	& PL01-12x130/80	0150-1399

Cable Type



Linear Motor		Stator		Slider	
Type	Art.No	Type	Art. No.	Type	Art No.
P01-23x80/10x50	-->	PS01-23x80	0150-1201	& PL01-12x130/80	0150-1399
P01-23x80/10x50-R20	-->	PS01-23x80-R20	0150-1241	& PL01-12x130/80	0150-1399

Slider

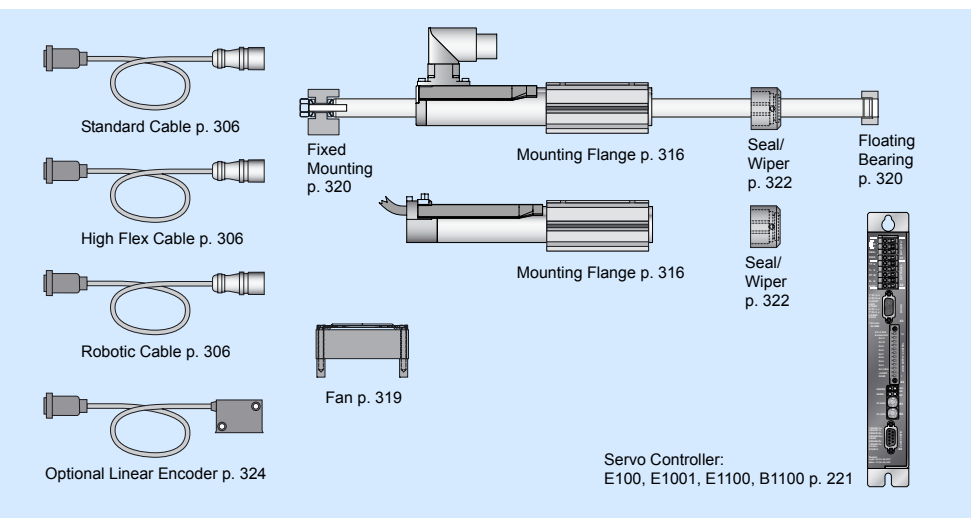


Standard Type		Slider Standard		PL01-12x130/80	
Special Sliders		Heavy Duty Slider with WC/C-Coating		PL02-12x130/80	
		Hollow Slider hole diameter 4.2mm		PL01-12x130/80-L	
				0150-1445	

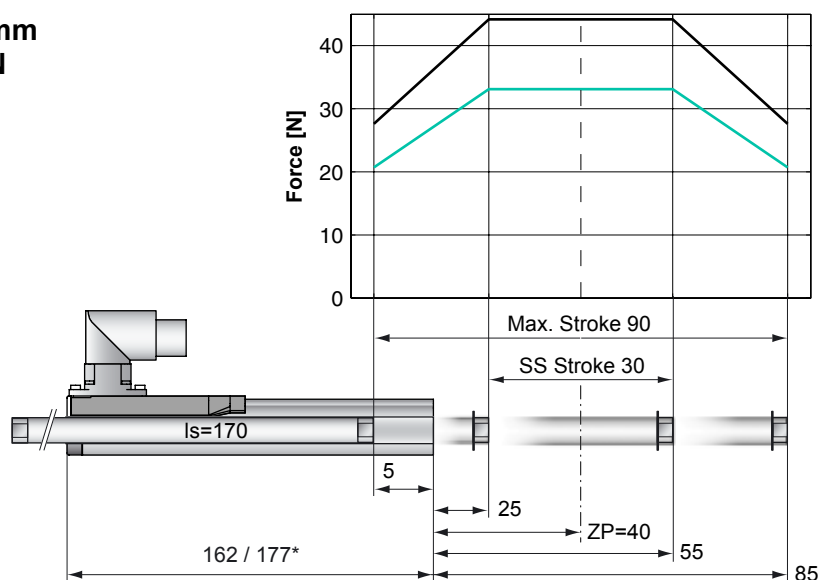
Connectors

Motor Connector Wiring		P01-23...-R	
Cable Length:		P01-23...-R20	
P01-23x80/...x... 1.0m		P01-23...-R20 0.2m	
Ph 1+	red	1	1
Ph 1-	pink	2	6
Ph 2+	blue	3	2
Ph 2-	grey	4	7
+5VDC	white	A	3
GND	inner Shield	B	8
Sine	yellow	C	4
Cosine	green	D	9
Temp.	black	E	5
Shield	outer Shield	Case	Case

Accessoires



Max. Stroke: 90mm
Peak Force: 44N



Standard Winding:

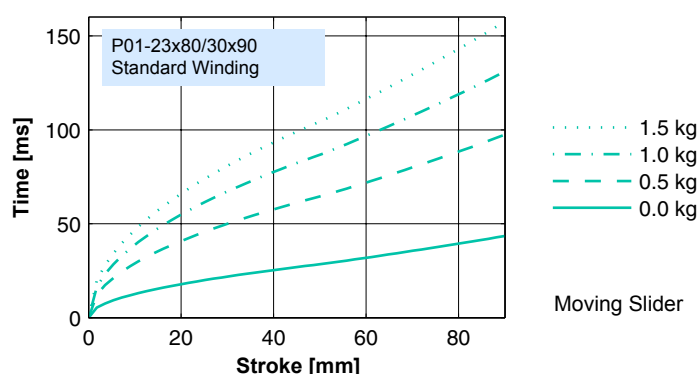
— E1100, 72VDC &
E1001, 72VDC
— E100, 48VDC

Dimensions in mm
*Cable Type

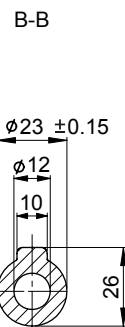
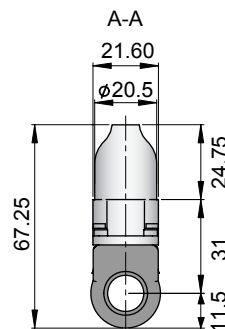
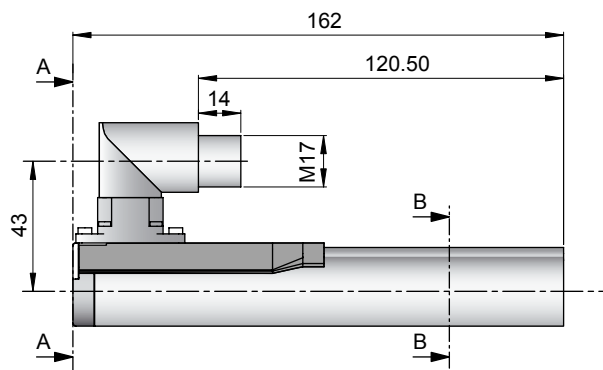
Motor Specification

P01-		Connector Type	Cable Type
		23x80/30x90-R	23x80/30x90 23x80/30x90-R20
Stroke Max.	mm (in)	90 (3.54)	90 (3.54)
Stroke SS	mm (in)	30 (1.18)	30 (1.18)
Peak Force E1100 / E1001	N (lbf)	44 (9.9)	44 (9.9)
Peak Force E100	N (lbf)	33 (7.4)	33 (7.4)
Cont. Force	N (lbf)	9 (2.0)	9 (2.0)
Cont. Force Fan cooling	N (lbf)	16 (3.7)	16 (3.7)
Border Force	%	63	63
Force Constant	N/A (lbf/A)	11.0 (2.48)	11.0 (2.48)
Max. Current @ 72VDC	A	4.0	4.0
Max. Current @ 48VDC	A	3.8	3.8
Max. Velocity @ 72VDC	m/s (in/s)	6.0 (236)	6.0 (236)
Max. Velocity @ 48VDC	m/s (in/s)	4.0 (157)	4.0 (157)
Phase Resist. 25/80 °C	Ohm	10.3/12.5	10.3/12.5
Phase Inductance	mH	1.4	1.4
Thermal Resistance	°K/W	7.0	7.0
Thermal Time Const.	sec	1600	1600
Stator Diameter	mm (in)	23 (0.91)	23 (0.91)
Stator Length	mm (in)	162 (6.38)	177 (6.97)
Stator Mass	g (lb)	265 (0.58)	265 (0.58)
Slider Diameter	mm (in)	12 (0.47)	12 (0.47)
Slider Length	mm (in)	170 (6.69)	170 (6.69)
Slider Mass	g (lb)	118 (0.26)	118 (0.26)
Position Repeatability	mm (in)	±0.05 (±0.0020)	±0.05 (±0.0020)
Linearity	%	±0.45	±0.45
Position Rep. with ES	mm (in)	±0.01 (±0.0004)	±0.01 (±0.0004)
Linearity with ES	mm (in)	±0.01 (±0.0004)	±0.01 (±0.0004)

Position-Time Diagram

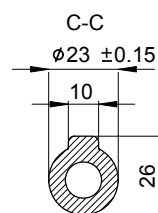
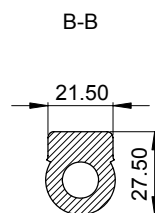
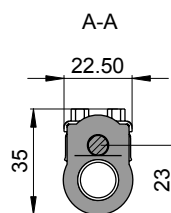
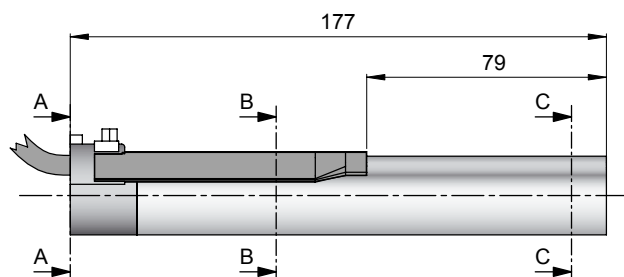


Connector Type



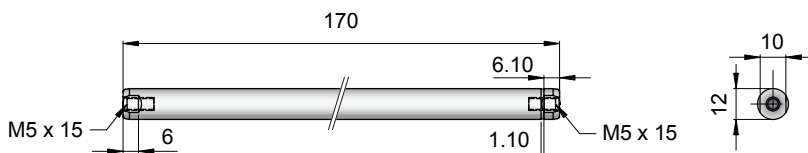
Linear Motor		Stator		Slider	
Type	Art.No	Type	Art. No.	Type	Art No.
P01-23x80/30x90-R	-->	PS01-23x80-R	0150-1233	& PL01-12x170/120	0150-1301

Cable Type



Linear Motor		Stator		Slider	
Type	Art.No	Type	Art. No.	Type	Art No.
P01-23x80/30x90	-->	PS01-23x80	0150-1201	& PL01-12x170/120	0150-1301
P01-23x80/30x90-R20	-->	PS01-23x80-R20	0150-1241	& PL01-12x170/120	0150-1301

Slider

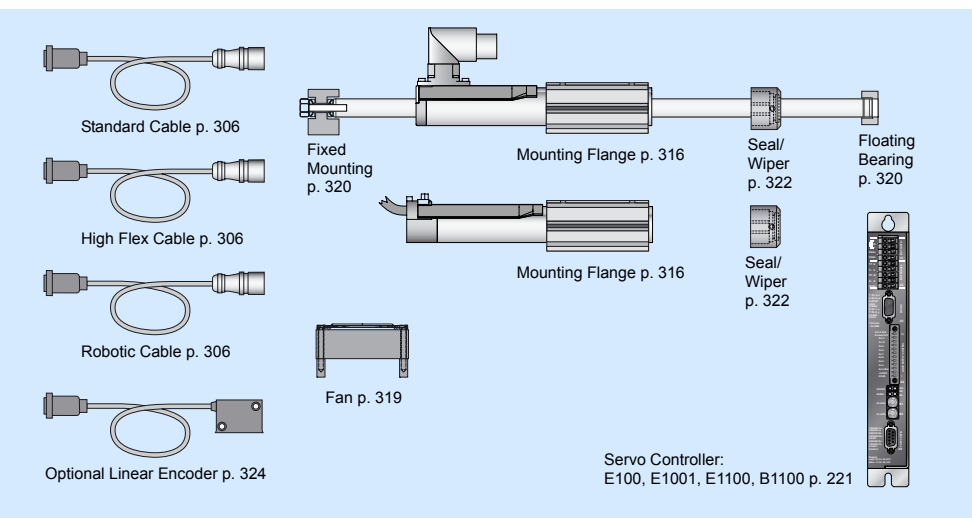


Standard Type	Slider Standard	PL01-12x170/120	0150-1301
Special Sliders	Heavy Duty Slider with WC/C-Coating	PL02-12x170/120	0150-1303
	Hollow Slider hole diameter 4.2mm	PL01-12x170/120-L	0150-1375

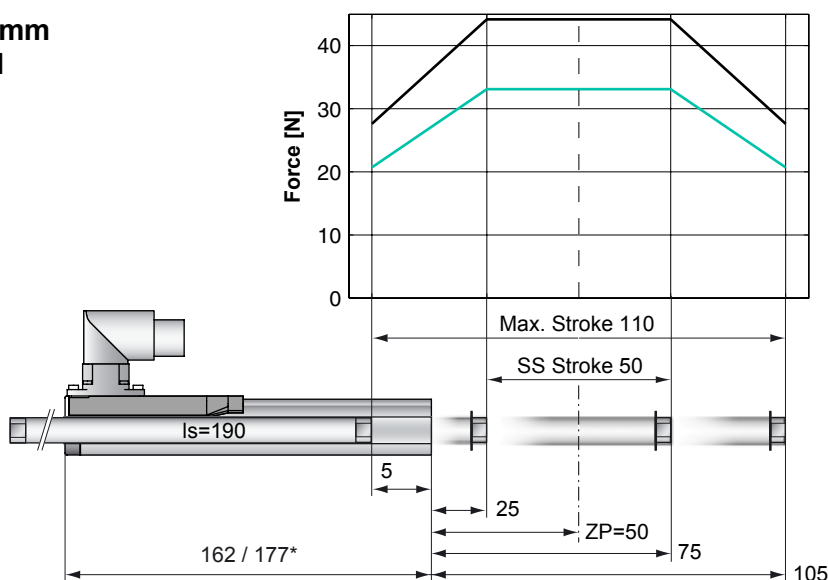
Connectors

Motor Connector Wiring		P01-23...-R		P01-23...-R20		P01-23...-R20	
Cable Length:		P01-23...-R		P01-23...-R20		P01-23...-R20	
P01-23x80/...x... 1.0m		P01-23...-R		P01-23...-R20		P01-23...-R20	
P01-23x80/...x...-R20 0.2m		P01-23...-R		P01-23...-R20		P01-23...-R20	
Ph 1+	red	1	1				
Ph 1-	pink	2	6				
Ph 2+	blue	3	2				
Ph 2-	grey	4	7				
+5VDC	white	A	3				
GND	inner Shield	B	8				
Sine	yellow	C	4				
Cosine	green	D	9				
Temp.	black	E	5				
Shield	outer Shield	Case	Case				

Accessoires



Max. Stroke: 110mm
Peak Force: 44N



Standard Winding:

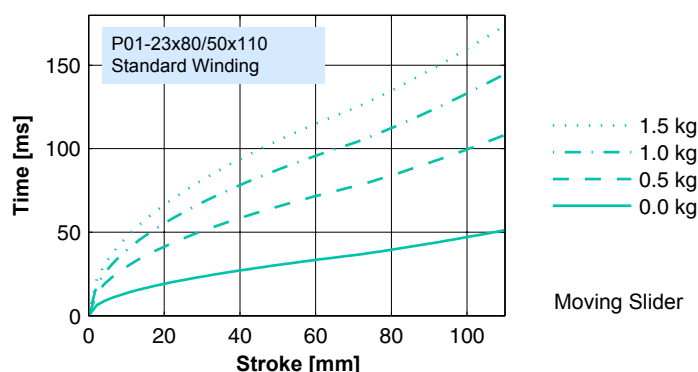
— E1100, 72VDC &
E1001, 72VDC
— E100, 48VDC

Dimensions in mm
*Cable Type

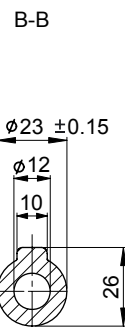
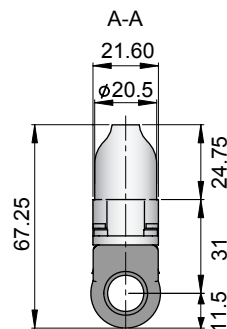
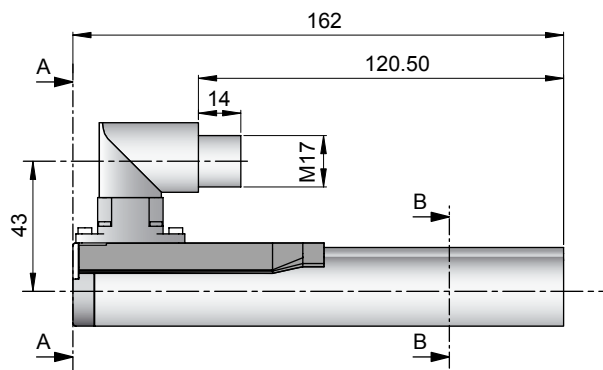
Motor Specification

P01-		Connector Type	Cable Type
		23x80/50x110-R	23x80/50x110 23x80/50x110-R20
Stroke Max.	mm (in)	110 (4.33)	110 (4.33)
Stroke SS	mm (in)	50 (1.97)	50 (1.97)
Peak Force E1100 / E1001	N (lbf)	44 (9.9)	44 (9.9)
Peak Force E100	N (lbf)	33 (7.4)	33 (7.4)
Cont. Force	N (lbf)	9 (2.0)	9 (2.0)
Cont. Force Fan cooling	N (lbf)	16 (3.7)	16 (3.7)
Border Force	%	63	63
Force Constant	N/A (lbf/A)	11.0 (2.48)	11.0 (2.48)
Max. Current @ 72VDC	A	4.0	4.0
Max. Current @ 48VDC	A	3.8	3.8
Max. Velocity @ 72VDC	m/s (in/s)	6.0 (236)	6.0 (236)
Max. Velocity @ 48VDC	m/s (in/s)	4.0 (157)	4.0 (157)
Phase Resist. 25/80 °C	Ohm	10.3/12.5	10.3/12.5
Phase Inductance	mH	1.4	1.4
Thermal Resistance	°K/W	7.0	7.0
Thermal Time Const.	sec	1600	1600
Stator Diameter	mm (in)	23 (0.91)	23 (0.91)
Stator Length	mm (in)	162 (6.38)	177 (6.97)
Stator Mass	g (lb)	265 (0.58)	265 (0.58)
Slider Diameter	mm (in)	12 (0.47)	12 (0.47)
Slider Length	mm (in)	190 (7.48)	190 (7.48)
Slider Mass	g (lb)	135 (0.30)	135 (0.30)
Position Repeatability	mm (in)	±0.05 (±0.0020)	±0.05 (±0.0020)
Linearity	%	±0.40	±0.40
Position Rep. with ES	mm (in)	±0.01 (±0.0004)	±0.01 (±0.0004)
Linearity with ES	mm (in)	±0.01 (±0.0004)	±0.01 (±0.0004)

Position-Time Diagram

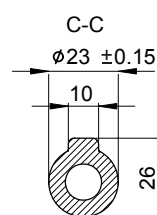
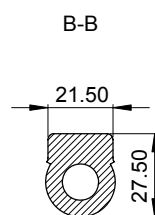
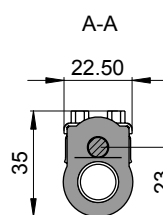
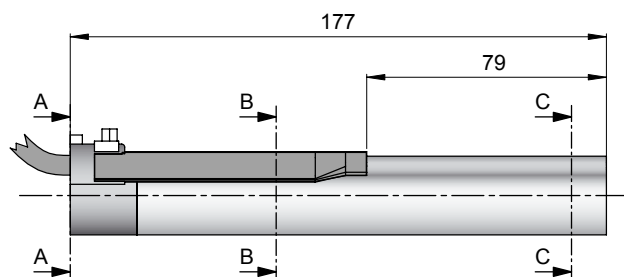


Connector Type



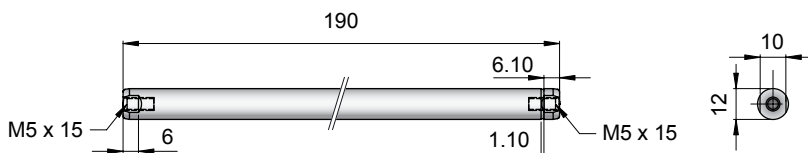
Linear Motor		Stator		Slider	
Type	Art.No	Type	Art. No.	Type	Art No.
P01-23x80/50x110-R	-->	PS01-23x80-R	0150-1233	& PL01-12x190/140	0150-1302

Cable Type



Linear Motor		Stator		Slider	
Type	Art.No	Type	Art. No.	Type	Art No.
P01-23x80/50x110	-->	PS01-23x80	0150-1201	& PL01-12x190/140	0150-1302
P01-23x80/50x110-R20	-->	PS01-23x80-R20	0150-1241	& PL01-12x190/140	0150-1302

Slider

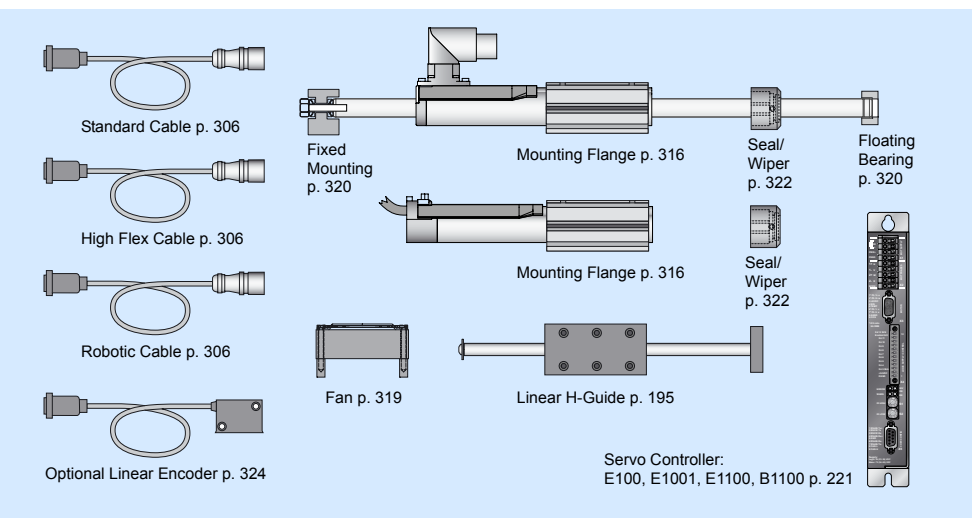


Standard Type	Slider Standard	PL01-12x190/140	0150-1302
Special Sliders	Heavy Duty Slider with WC/C-Coating	PL02-12x190/140	0150-1304
	Hollow Slider hole diameter 4.2mm	PL01-12x190/140-L	0150-1478

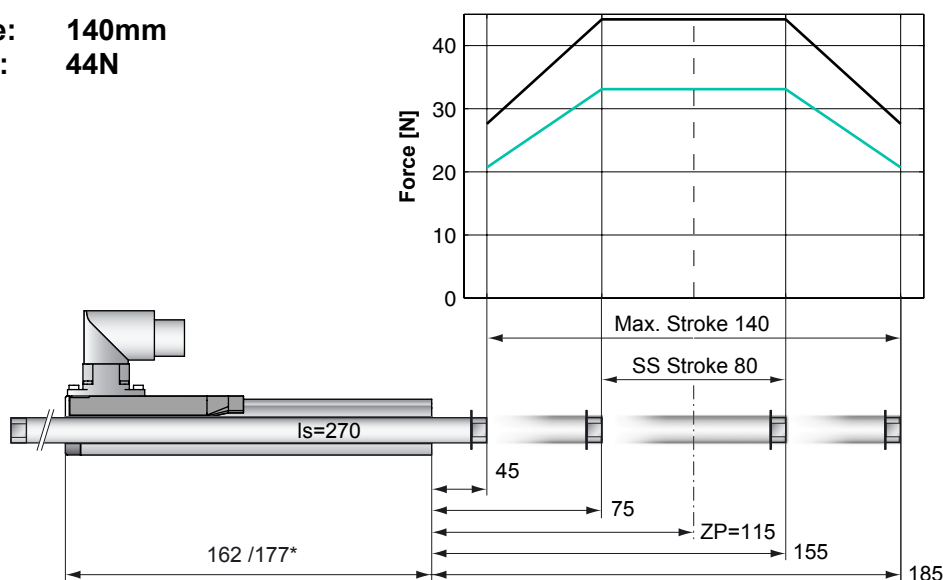
Connectors

Motor Connector Wiring		P01-23...-R P01-23...-R20		P01-23...
Cable Length: P01-23x80/...x... 1.0m P01-23x80/...x...-R20 0.2m				
Ph 1+	red	1	1	
Ph 1-	pink	2	6	
Ph 2+	blue	3	2	
Ph 2-	grey	4	7	
+5VDC	white	A	3	
GND	inner Shield	B	8	
Sine	yellow	C	4	
Cosine	green	D	9	
Temp.	black	E	5	
Shield	outer Shield	Case	Case	

Accessoires



Max. Stroke: 140mm
Peak Force: 44N



Standard Winding:

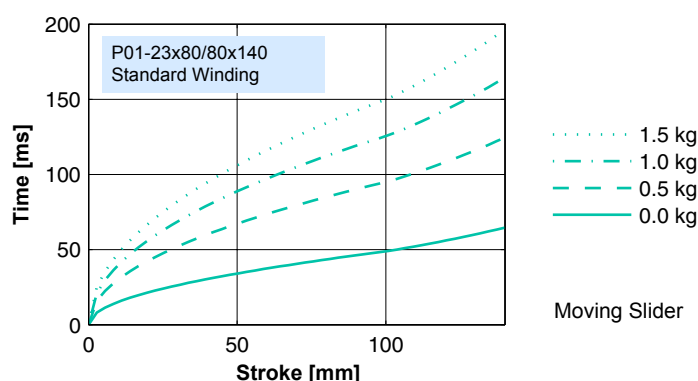
— E1100, 72VDC &
E1001, 72VDC
— E100, 48VDC

Dimensions in mm
*Cable Type

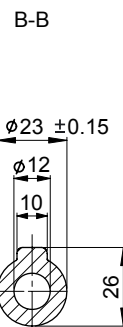
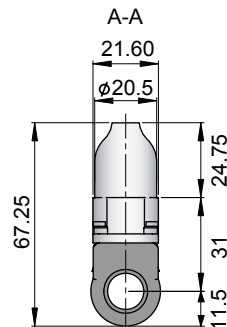
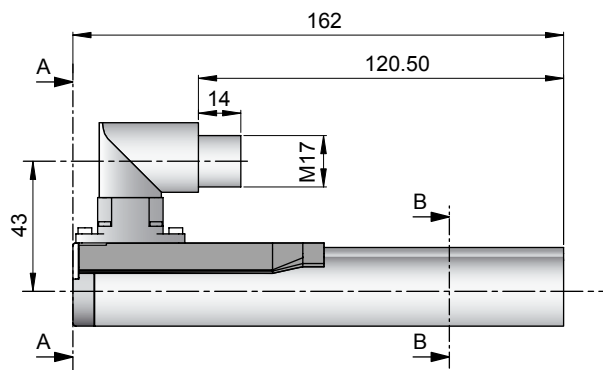
Motor Specification

P01-		Connector Type	Cable Type
		23x80/80x140-R	23x80/80x140 23x80/80x140-R20
Stroke Max.	mm (in)	140 (5.51)	140 (5.51)
Stroke SS	mm (in)	80 (3.15)	80 (3.15)
Peak Force E1100 / E1001	N (lbf)	44 (9.9)	44 (9.9)
Peak Force E100	N (lbf)	33 (7.4)	33 (7.4)
Cont. Force	N (lbf)	9 (2.0)	9 (2.0)
Cont. Force Fan cooling	N (lbf)	16 (3.7)	16 (3.7)
Border Force	%	63	63
Force Constant	N/A (lbf/A)	11.0 (2.48)	11.0 (2.48)
Max. Current @ 72VDC	A	4.0	4.0
Max. Current @ 48VDC	A	3.8	3.8
Max. Velocity @ 72VDC	m/s (in/s)	6.0 (236)	6.0 (236)
Max. Velocity @ 48VDC	m/s (in/s)	4.0 (157)	4.0 (157)
Phase Resist. 25/80 °C	Ohm	10.3/12.5	10.3/12.5
Phase Inductance	mH	1.4	1.4
Thermal Resistance	°K/W	7.0	7.0
Thermal Time Const.	sec	1600	1600
Stator Diameter	mm (in)	23 (0.91)	23 (0.91)
Stator Length	mm (in)	162 (6.38)	177 (6.97)
Stator Mass	g (lb)	265 (0.58)	265 (0.58)
Slider Diameter	mm (in)	12 (0.47)	12 (0.47)
Slider Length	mm (in)	270 (10.63)	270 (10.63)
Slider Mass	g (lb)	171 (0.38)	171 (0.38)
Position Repeatability	mm (in)	±0.05 (±0.0020)	±0.05 (±0.0020)
Linearity	%	±0.35	±0.35
Position Rep. with ES	mm (in)	±0.01 (±0.0004)	±0.01 (±0.0004)
Linearity with ES	mm (in)	±0.01 (±0.0004)	±0.01 (±0.0004)

Position-Time Diagram

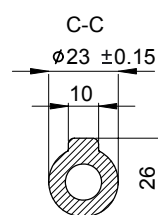
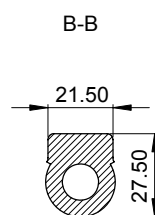
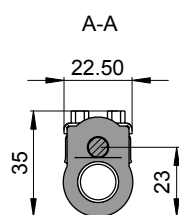
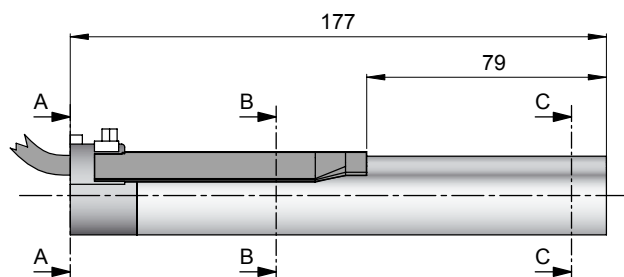


Connector Type



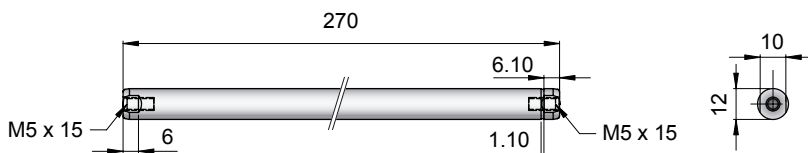
Linear Motor		Stator		Slider	
Type	Art.No	Type	Art. No.	Type	Art No.
P01-23x80/80x140-R	-->	PS01-23x80-R	0150-1233	& PL01-12x270/170	0150-1307

Cable Type



Linear Motor		Stator		Slider	
Type	Art.No	Type	Art. No.	Type	Art No.
P01-23x80/80x140	-->	PS01-23x80	0150-1201	& PL01-12x270/170	0150-1307
P01-23x80/80x140-R20	-->	PS01-23x80-R20	0150-1241	& PL01-12x270/170	0150-1307

Slider

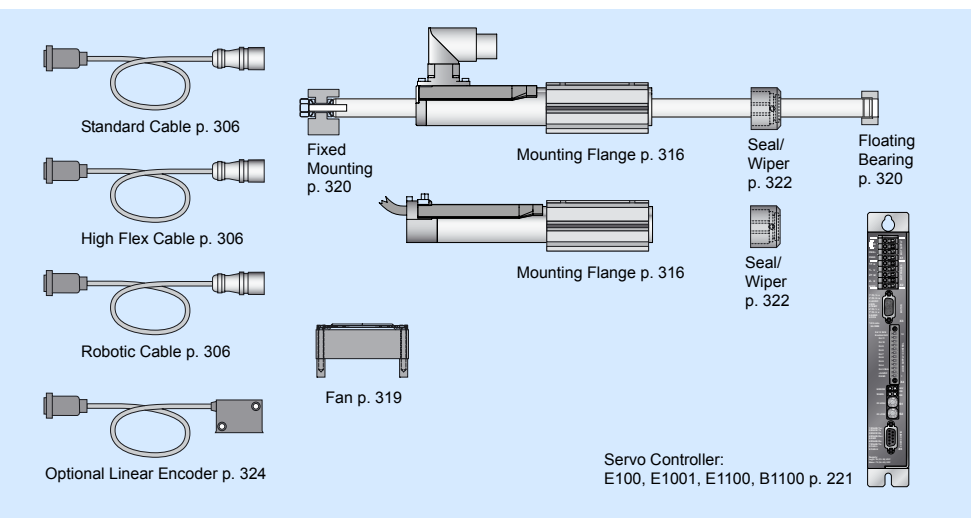


Standard Type	Slider Standard	PL01-12x270/170	0150-1307
Special Sliders	Heavy Duty Slider with WC/C-Coating	PL02-12x270/170	0150-1310
	Hollow Slider hole diameter 4.2mm	PL01-12x270/170-L	0150-1393

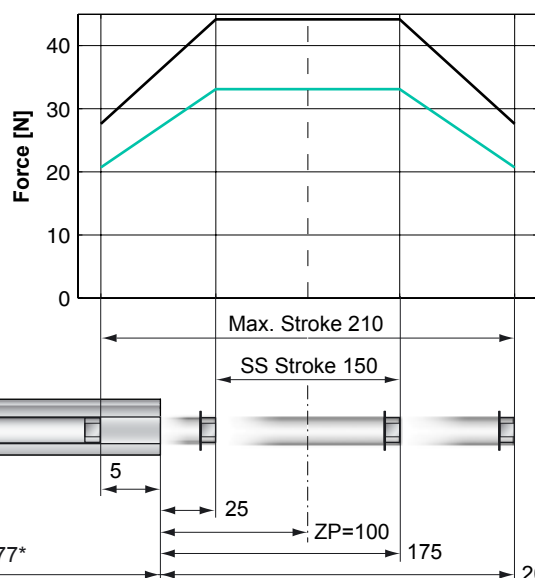
Connectors

Motor Connector Wiring		P01-23...-R P01-23...-R20		P01-23...
Cable Length: P01-23x80/...x... 1.0m P01-23x80/...x...-R20 0.2m				
Ph 1+	red	1	1	
Ph 1-	pink	2	6	
Ph 2+	blue	3	2	
Ph 2-	grey	4	7	
+5VDC	white	A	3	
GND	inner Shield	B	8	
Sine	yellow	C	4	
Cosine	green	D	9	
Temp.	black	E	5	
Shield	outer Shield	Case	Case	

Accessoires



Max. Stroke: 210mm
Peak Force: 44N



Standard Winding:

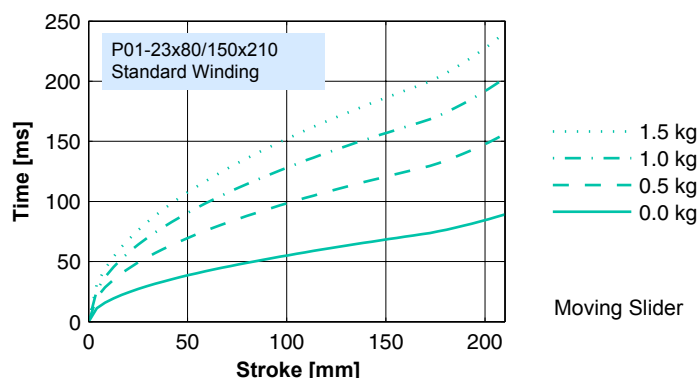
— E1100, 72VDC &
E1001, 72VDC
— E100, 48VDC

Dimensions in mm
*Cable Type

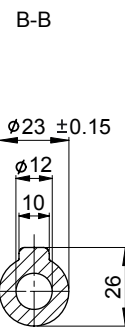
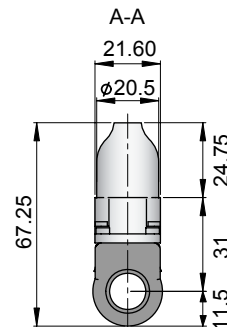
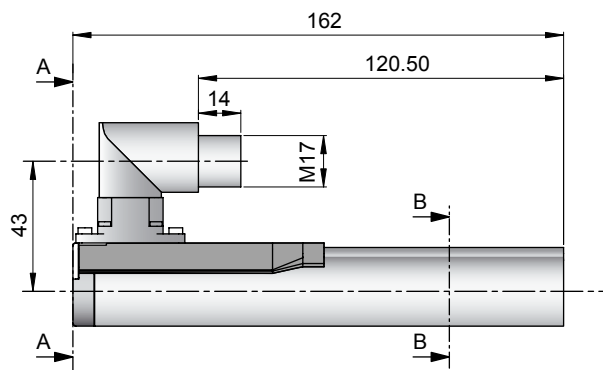
Motor Specification

P01-		Connector Type	Cable Type
		23x80/150x210-R	23x80/150x210 23x80/150x210-R20
Stroke Max.	mm (in)	210 (8.27)	210 (8.27)
Stroke SS	mm (in)	150 (5.91)	150 (5.91)
Peak Force E1100 / E1001	N (lbf)	44 (9.9)	44 (9.9)
Peak Force E100	N (lbf)	33 (7.4)	33 (7.4)
Cont. Force	N (lbf)	9 (2.0)	9 (2.0)
Cont. Force Fan cooling	N (lbf)	16 (3.7)	16 (3.7)
Border Force	%	63	63
Force Constant	N/A (lbf/A)	11.0 (2.48)	11.0 (2.48)
Max. Current @ 72VDC	A	4.0	4.0
Max. Current @ 48VDC	A	3.8	3.8
Max. Velocity @ 72VDC	m/s (in/s)	6.0 (236)	6.0 (236)
Max. Velocity @ 48VDC	m/s (in/s)	4.0 (157)	4.0 (157)
Phase Resist. 25/80 °C	Ohm	10.3/12.5	10.3/12.5
Phase Inductance	mH	1.4	1.4
Thermal Resistance	°K/W	7.0	7.0
Thermal Time Const.	sec	1600	1600
Stator Diameter	mm (in)	23 (0.91)	23 (0.91)
Stator Length	mm (in)	162 (6.38)	177 (6.97)
Stator Mass	g (lb)	265 (0.58)	265 (0.58)
Slider Diameter	mm (in)	12 (0.47)	12 (0.47)
Slider Length	mm (in)	290 (11.42)	290 (11.42)
Slider Mass	g (lb)	220 (0.49)	220 (0.49)
Position Repeatability	mm (in)	±0.05 (±0.0020)	±0.05 (±0.0020)
Linearity	%	±0.30	±0.30
Position Rep. with ES	mm (in)	±0.01 (±0.0004)	±0.01 (±0.0004)
Linearity with ES	mm (in)	±0.01 (±0.0004)	±0.01 (±0.0004)

Position-Time Diagram

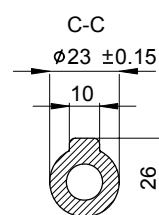
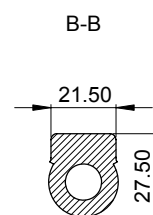
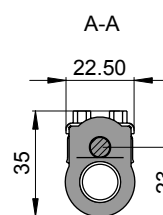
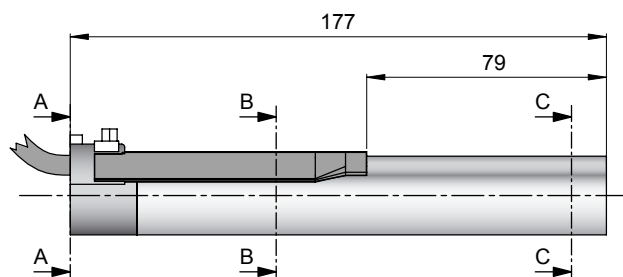


Connector Type



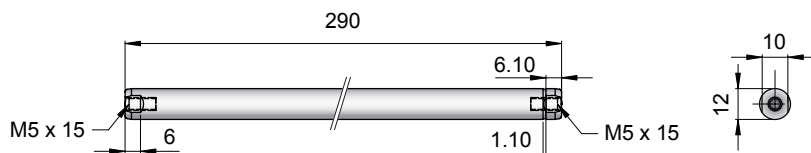
Linear Motor		Stator		Slider	
Type	Art.No	Type	Art. No.	Type	Art No.
P01-23x80/150x210-R	-->	PS01-23x80-R	0150-1233	& PL01-12x290/240	0150-1320

Cable Type



Linear Motor		Stator		Slider	
Type	Art.No	Type	Art. No.	Type	Art No.
P01-23x80/150x210	-->	PS01-23x80	0150-1201	& PL01-12x290/240	0150-1320
P01-23x80/150x210-R20	-->	PS01-23x80-R20	0150-1241	& PL01-12x290/240	0150-1320

Slider

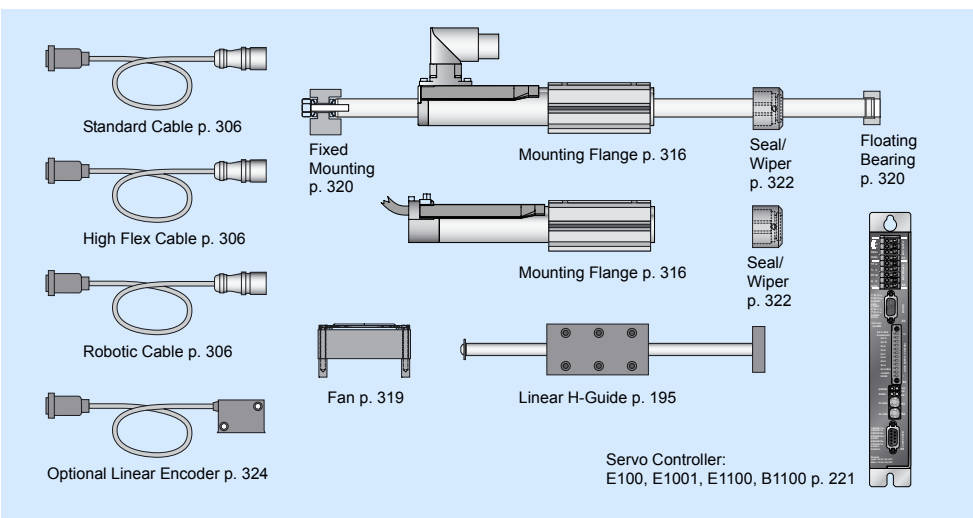


Standard Type		Slider Standard		PL01-12x290/240	
Special Sliders		Heavy Duty Slider with WC/C-Coating		PL02-12x290/240	
		Hollow Slider hole diameter 4.2mm		PL01-12x290/240-L	
				0150-1320	
				0150-1321	
				0150-1363	

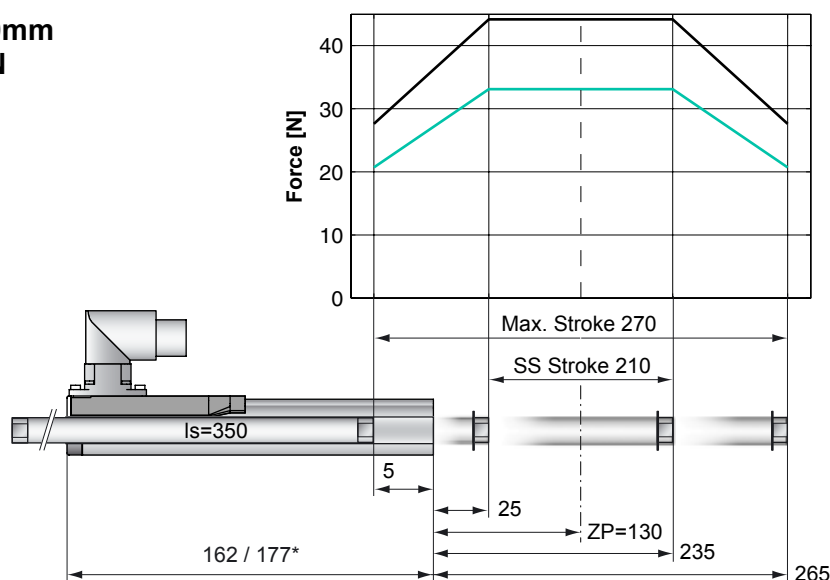
Connectors

Motor Connector Wiring		P01-23...-R		P01-23...-R20		P01-23...-R20	
Cable Length:		P01-23...-R		P01-23...-R20		P01-23...-R20	
P01-23x80/...x... 1.0m		P01-23...-R		P01-23...-R20		P01-23...-R20	
P01-23x80/...x...-R20 0.2m		P01-23...-R		P01-23...-R20		P01-23...-R20	
Ph 1+	red	1	1				
Ph 1-	pink	2	6				
Ph 2+	blue	3	2				
Ph 2-	grey	4	7				
+5VDC	white	A	3				
GND	inner Shield	B	8				
Sine	yellow	C	4				
Cosine	green	D	9				
Temp.	black	E	5				
Shield	outer Shield	Case	Case				

Accessoires



Max. Stroke: 270mm
Peak Force: 44N



Standard Winding:

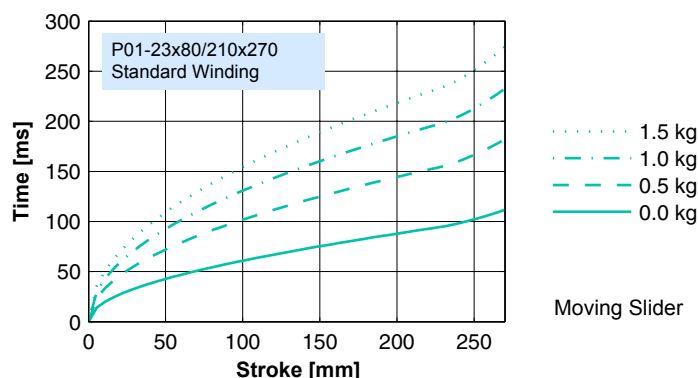
— E1100, 72VDC &
E1001, 72VDC
— E100, 48VDC

Dimensions in mm
*Cable Type

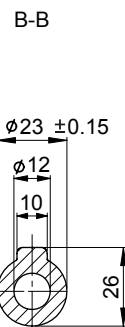
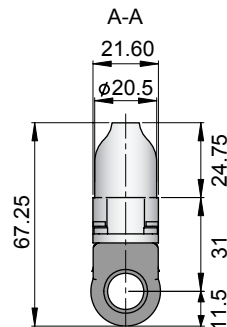
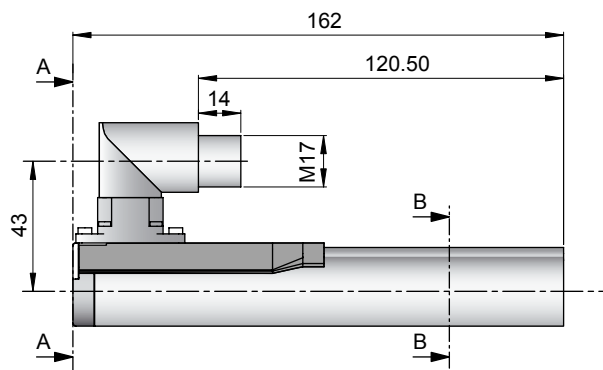
Motor Specification

P01-		Connector Type	Cable Type
		23x80/210x270-R	23x80/210x270 23x80/210x270-R20
Stroke Max.	mm (in)	270 (10.63)	270 (10.63)
Stroke SS	mm (in)	210 (8.27)	210 (8.27)
Peak Force E1100 / E1001	N (lbf)	44 (9.9)	44 (9.9)
Peak Force E100	N (lbf)	33 (7.4)	33 (7.4)
Cont. Force	N (lbf)	9 (2.0)	9 (2.0)
Cont. Force Fan cooling	N (lbf)	16 (3.7)	16 (3.7)
Border Force	%	63	63
Force Constant	N/A (lbf/A)	11.0 (2.48)	11.0 (2.48)
Max. Current @ 72VDC	A	4.0	4.0
Max. Current @ 48VDC	A	3.8	3.8
Max. Velocity @ 72VDC	m/s (in/s)	6.0 (236)	6.0 (236)
Max. Velocity @ 48VDC	m/s (in/s)	4.0 (157)	4.0 (157)
Phase Resist. 25/80 °C	Ohm	10.3/12.5	10.3/12.5
Phase Inductance	mH	1.4	1.4
Thermal Resistance	°K/W	7.0	7.0
Thermal Time Const.	sec	1600	1600
Stator Diameter	mm (in)	23 (0.91)	23 (0.91)
Stator Length	mm (in)	162 (6.38)	177 (6.97)
Stator Mass	g (lb)	265 (0.58)	265 (0.58)
Slider Diameter	mm (in)	12 (0.47)	12 (0.47)
Slider Length	mm (in)	350 (13.78)	350 (13.78)
Slider Mass	g (lb)	271 (0.60)	271 (0.60)
Position Repeatability	mm (in)	±0.05 (±0.0020)	±0.05 (±0.0020)
Linearity	%	±0.25	±0.25
Position Rep. with ES	mm (in)	±0.01 (±0.0004)	±0.01 (±0.0004)
Linearity with ES	mm (in)	±0.01 (±0.0004)	±0.01 (±0.0004)

Position-Time Diagram

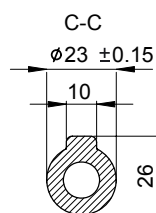
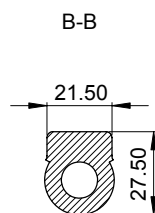
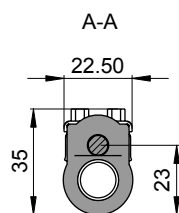
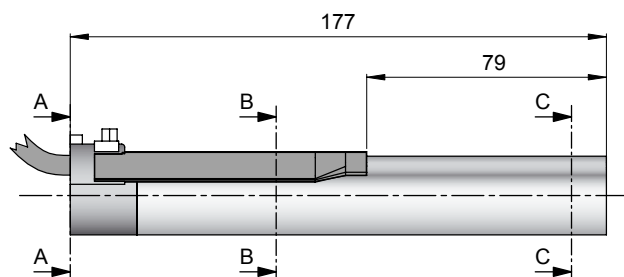


Connector Type



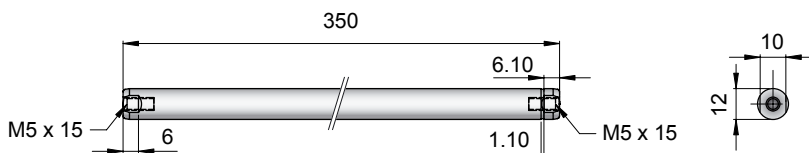
Linear Motor		Stator		Slider	
Type	Art.No	Type	Art. No.	Type	Art No.
P01-23x80/210x270-R	-->	PS01-23x80-R	0150-1233	& PL01-12x350/300	0150-1322

Cable Type



Linear Motor		Stator		Slider	
Type	Art.No	Type	Art. No.	Type	Art No.
P01-23x80/210x270	-->	PS01-23x80	0150-1201	& PL01-12x350/300	0150-1322
P01-23x80/210x270-R20	-->	PS01-23x80-R20	0150-1241	& PL01-12x350/300	0150-1322

Slider

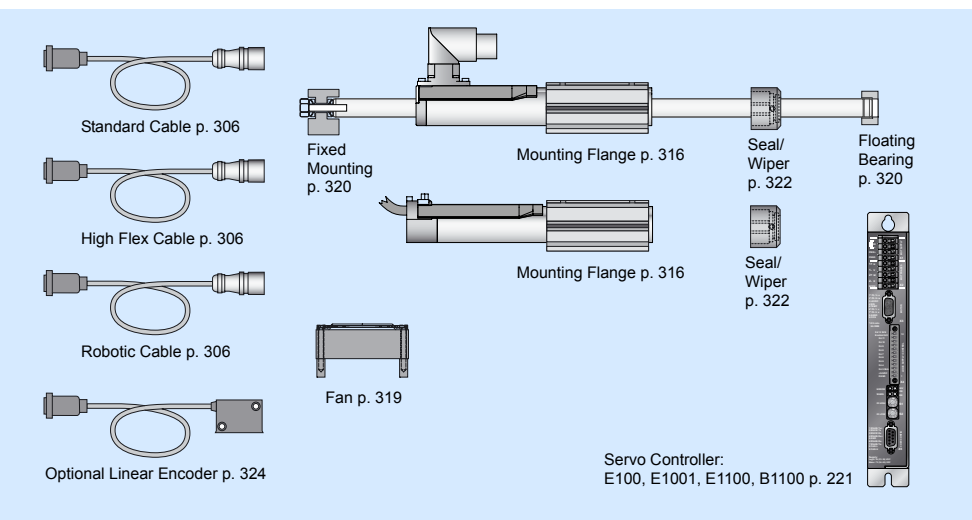


Standard Type		Slider Standard		PL01-12x350/300	
Special Sliders		Heavy Duty Slider with WC/C-Coating		PL02-12x350/300	
		Hollow Slider hole diameter 4.2mm		PL01-12x350/300-L	
				0150-1479	

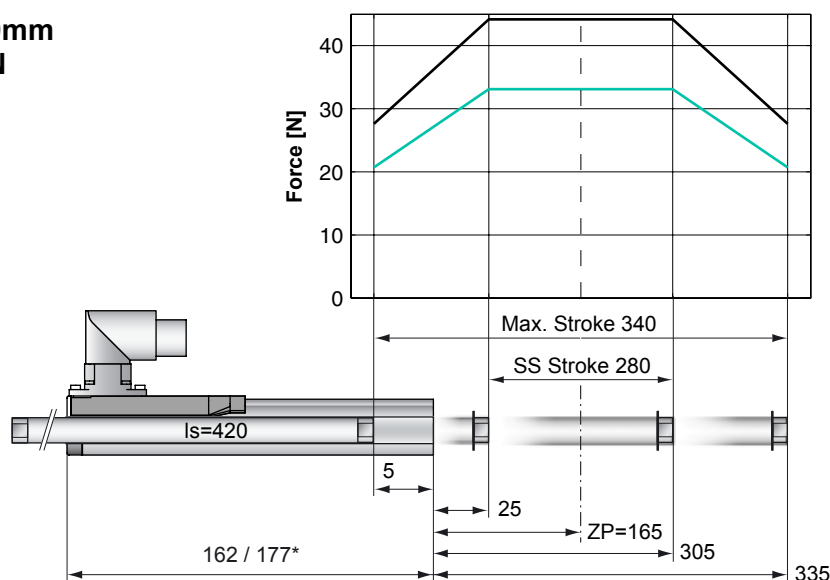
Connectors

Motor Connector Wiring		P01-23...-R P01-23...-R20		P01-23...-R20	
Cable Length:		1.0m		0.2m	
Ph 1+	red	1	1		
Ph 1-	pink	2	6		
Ph 2+	blue	3	2		
Ph 2-	grey	4	7		
+5VDC	white	A	3		
GND	inner Shield	B	8		
Sine	yellow	C	4		
Cosine	green	D	9		
Temp.	black	E	5		
Shield	outer Shield	Case	Case		

Accessoires



Max. Stroke: 340mm
Peak Force: 44N



Standard Winding:

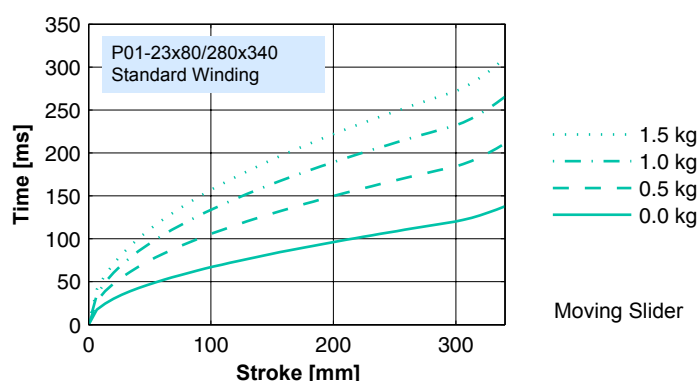
— E1100, 72VDC &
 E1001, 72VDC
 — E100, 48VDC

Dimensions in mm
 *Cable Type

Motor Specification

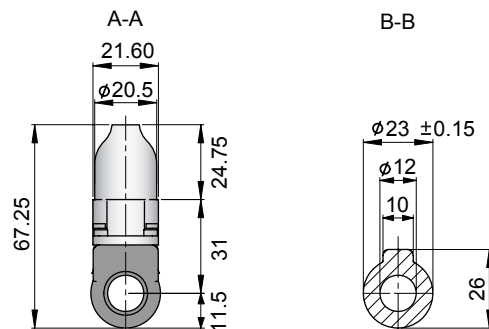
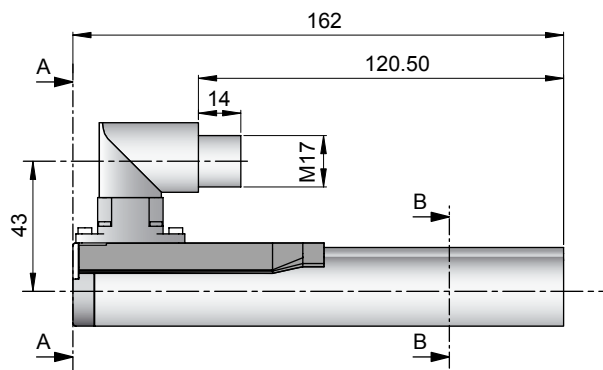
P01-		Connector Type	Cable Type
		23x80/280x340-R	23x80/280x340 23x80/280x340-R20
Stroke Max.	mm (in)	340 (13.39)	340 (13.39)
Stroke SS	mm (in)	280 (11.02)	280 (11.02)
Peak Force E1100 / E1001	N (lbf)	44 (9.9)	44 (9.9)
Peak Force E100	N (lbf)	33 (7.4)	33 (7.4)
Cont. Force	N (lbf)	9 (2.0)	9 (2.0)
Cont. Force Fan cooling	N (lbf)	16 (3.7)	16 (3.7)
Border Force	%	63	63
Force Constant	N/A (lbf/A)	11.0 (2.48)	11.0 (2.48)
Max. Current @ 72VDC	A	4.0	4.0
Max. Current @ 48VDC	A	3.8	3.8
Max. Velocity @ 72VDC	m/s (in/s)	6.0 (236)	6.0 (236)
Max. Velocity @ 48VDC	m/s (in/s)	4.0 (157)	4.0 (157)
Phase Resist. 25/80 °C	Ohm	10.3/12.5	10.3/12.5
Phase Inductance	mH	1.4	1.4
Thermal Resistance	°K/W	7.0	7.0
Thermal Time Const.	sec	1600	1600
Stator Diameter	mm (in)	23 (0.91)	23 (0.91)
Stator Length	mm (in)	162 (6.38)	177 (6.97)
Stator Mass	g (lb)	265 (0.58)	265 (0.58)
Slider Diameter	mm (in)	12 (0.47)	12 (0.47)
Slider Length	mm (in)	420 (16.54)	420 (16.54)
Slider Mass	g (lb)	330 (0.73)	330 (0.73)
Position Repeatability	mm (in)	±0.05 (±0.0020)	±0.05 (±0.0020)
Linearity	%	±0.25	±0.25
Position Rep. with ES	mm (in)	±0.01 (±0.0004)	±0.01 (±0.0004)
Linearity with ES	mm (in)	±0.01 (±0.0004)	±0.01 (±0.0004)

Position-Time Diagram



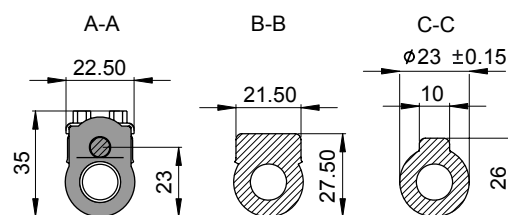
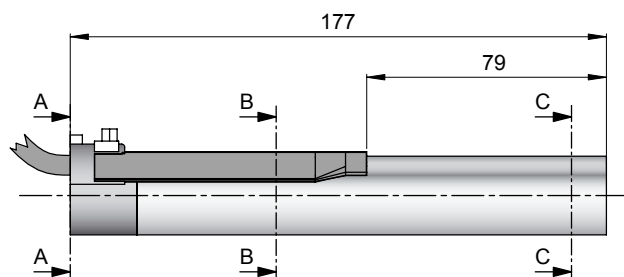
Moving Slider

Connector Type



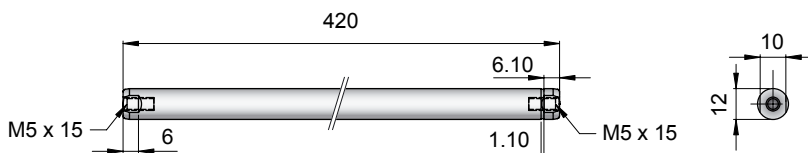
Linear Motor		Stator		Slider	
Type	Art.No	Type	Art. No.	Type	Art No.
P01-23x80/280x340-R	-->	PS01-23x80-R	0150-1233	& PL01-12x420/370	0150-1324

Cable Type



Linear Motor		Stator		Slider	
Type	Art.No	Type	Art. No.	Type	Art No.
P01-23x80/280x340	-->	PS01-23x80	0150-1201	& PL01-12x420/370	0150-1324
P01-23x80/280x340-R20	-->	PS01-23x80-R20	0150-1241	& PL01-12x420/370	0150-1324

Slider

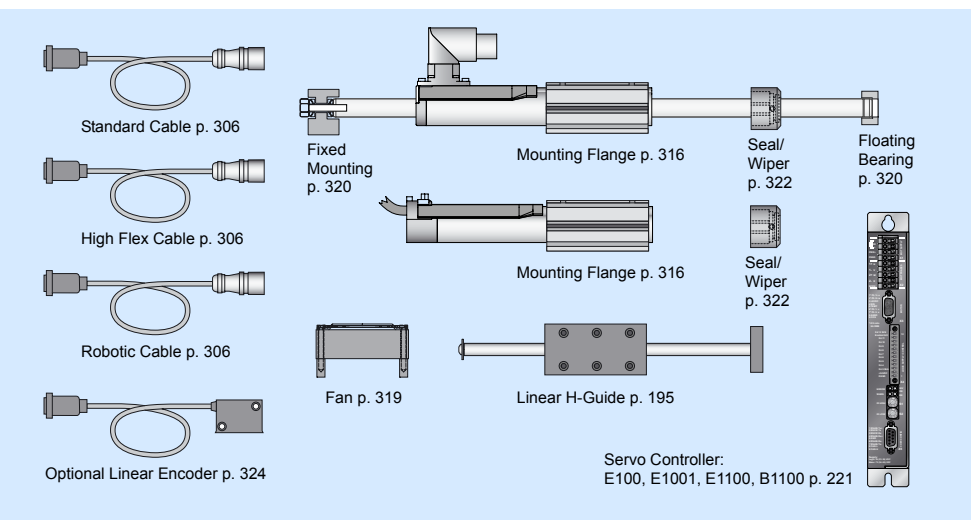


Standard Type		Slider Standard		PL01-12x420/370	
Special Sliders		Heavy Duty Slider with WC/C-Coating		PL02-12x420/370	
		Hollow Slider hole diameter 4.2mm		PL01-12x420/370-L	
				0150-1324	

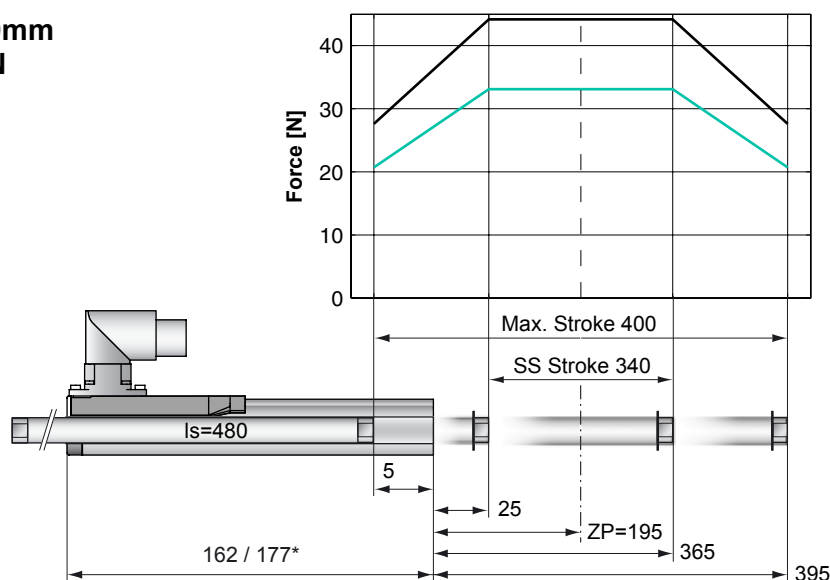
Connectors

Motor Connector Wiring		P01-23...-R	
Cable Length:		P01-23...-R20	
P01-23x80/...x... 1.0m		P01-23...-R20 0.2m	
Ph 1+	red	1	1
Ph 1-	pink	2	6
Ph 2+	blue	3	2
Ph 2-	grey	4	7
+5VDC	white	A	3
GND	inner Shield	B	8
Sine	yellow	C	4
Cosine	green	D	9
Temp.	black	E	5
Shield	outer Shield	Case	Case

Accessoires



Max. Stroke: 400mm
Peak Force: 44N



Standard Winding:

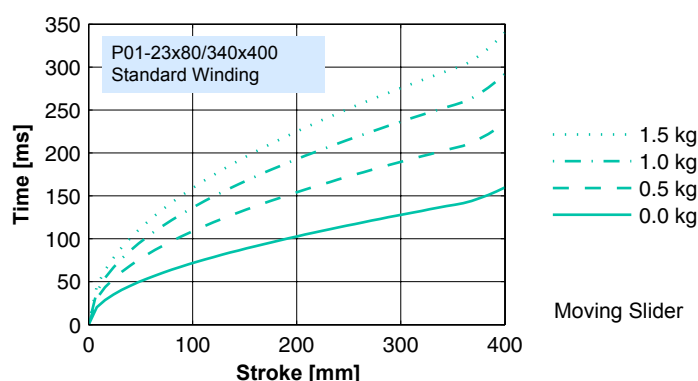
— E1100, 72VDC &
E1001, 72VDC
— E100, 48VDC

Dimensions in mm
*Cable Type

Motor Specification

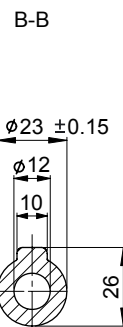
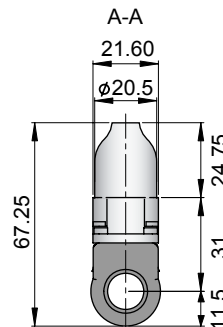
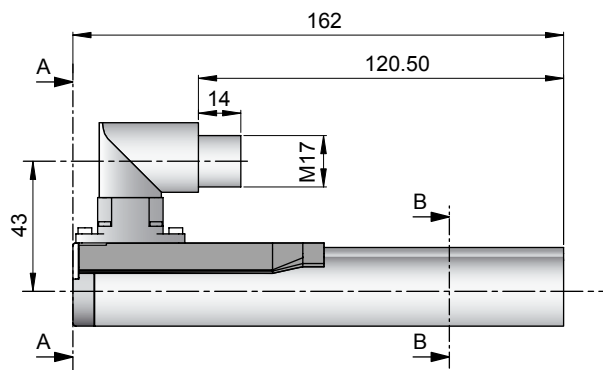
P01-		Connector Type	Cable Type
		23x80/340x400-R	23x80/340x400 23x80/340x400-R20
Stroke Max.	mm (in)	400 (15.75)	400 (15.75)
Stroke SS	mm (in)	340 (13.39)	340 (13.39)
Peak Force E1100 / E1001	N (lbf)	44 (9.9)	44 (9.9)
Peak Force E100	N (lbf)	33 (7.4)	33 (7.4)
Cont. Force	N (lbf)	9 (2.0)	9 (2.0)
Cont. Force Fan cooling	N (lbf)	16 (3.7)	16 (3.7)
Border Force	%	63	63
Force Constant	N/A (lbf/A)	11.0 (2.48)	11.0 (2.48)
Max. Current @ 72VDC	A	4.0	4.0
Max. Current @ 48VDC	A	3.8	3.8
Max. Velocity @ 72VDC	m/s (in/s)	6.0 (236)	6.0 (236)
Max. Velocity @ 48VDC	m/s (in/s)	4.0 (157)	4.0 (157)
Phase Resist. 25/80 °C	Ohm	10.3/12.5	10.3/12.5
Phase Inductance	mH	1.4	1.4
Thermal Resistance	°K/W	7.0	7.0
Thermal Time Const.	sec	1600	1600
Stator Diameter	mm (in)	23 (0.91)	23 (0.91)
Stator Length	mm (in)	162 (6.38)	177 (6.97)
Stator Mass	g (lb)	265 (0.58)	265 (0.58)
Slider Diameter	mm (in)	12 (0.47)	12 (0.47)
Slider Length	mm (in)	480 (18.90)	480 (18.90)
Slider Mass	g (lb)	380 (0.84)	380 (0.84)
Position Repeatability	mm (in)	±0.05 (±0.0020)	±0.05 (±0.0020)
Linearity	%	±0.25	±0.25
Position Rep. with ES	mm (in)	±0.01 (±0.0004)	±0.01 (±0.0004)
Linearity with ES	mm (in)	±0.01 (±0.0004)	±0.01 (±0.0004)

Position-Time Diagram



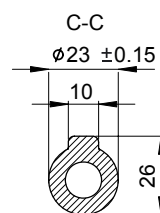
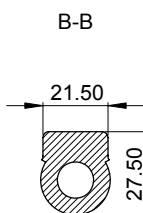
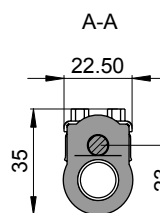
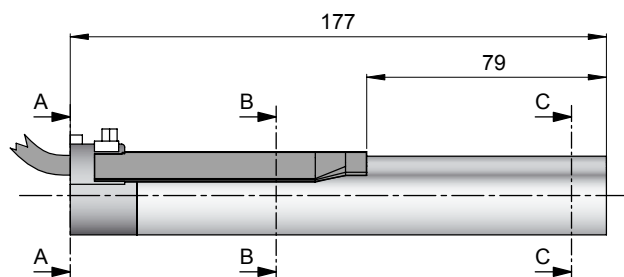
Moving Slider

Connector Type



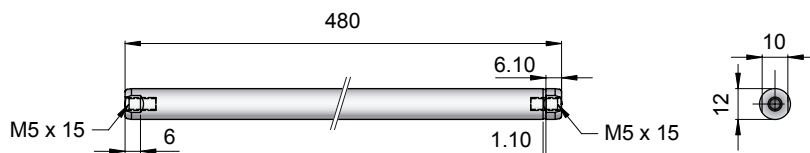
Linear Motor		Stator		Slider	
Type	Art.No	Type	Art. No.	Type	Art No.
P01-23x80/340x400-R	-->	PS01-23x80-R	0150-1233	& PL01-12x480/430	0150-1372

Cable Type



Linear Motor		Stator		Slider	
Type	Art.No	Type	Art. No.	Type	Art No.
P01-23x80/340x400	-->	PS01-23x80	0150-1201	& PL01-12x480/430	0150-1372
P01-23x80/340x400-R20	-->	PS01-23x80-R20	0150-1241	& PL01-12x480/430	0150-1372

Slider

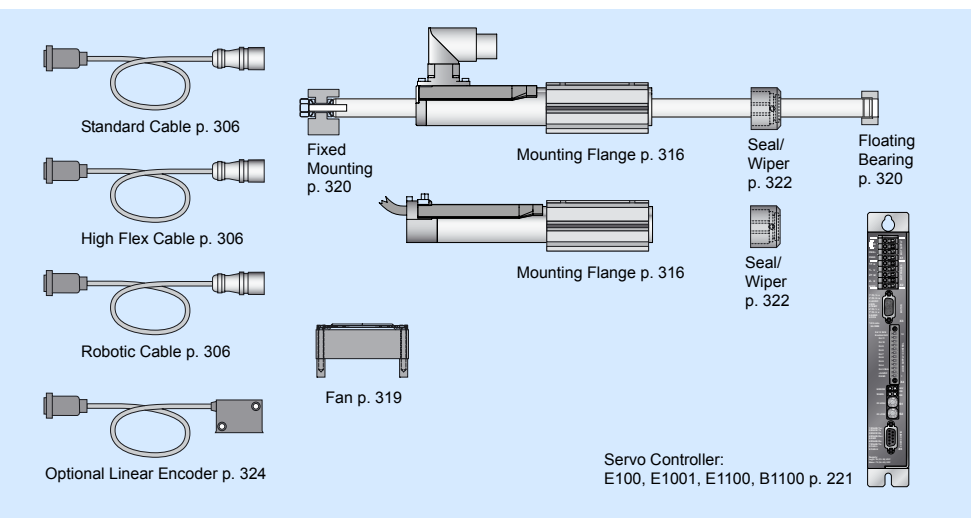


Standard Type	Slider Standard	PL01-12x480/430	0150-1372
Special Sliders	Heavy Duty Slider with WC/C-Coating	PL02-12x480/430	0150-1373
	Hollow Slider hole diameter 4.2mm	PL01-12x480/430-L	on request

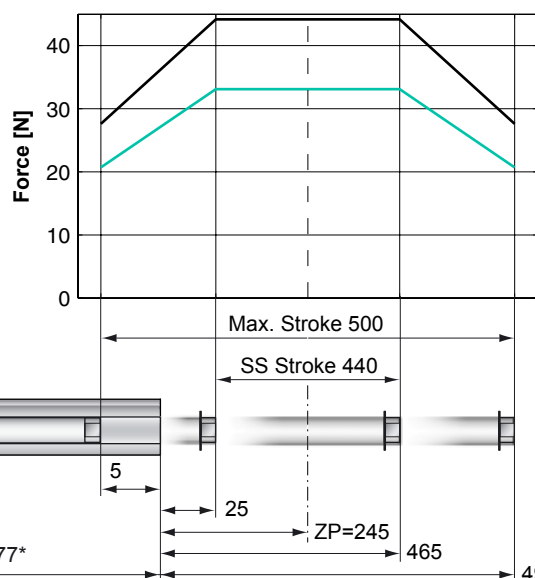
Connectors

Motor Connector Wiring		P01-23...-R P01-23...-R20		P01-23...
Cable Length: P01-23x80/...x... 1.0m P01-23x80/...x...-R20 0.2m				
Ph 1+	red	1	1	
Ph 1-	pink	2	6	
Ph 2+	blue	3	2	
Ph 2-	grey	4	7	
+5VDC	white	A	3	
GND	inner Shield	B	8	
Sine	yellow	C	4	
Cosine	green	D	9	
Temp.	black	E	5	
Shield	outer Shield	Case	Case	

Accessoires



Max. Stroke: 500mm
Peak Force: 44N



Standard Winding:

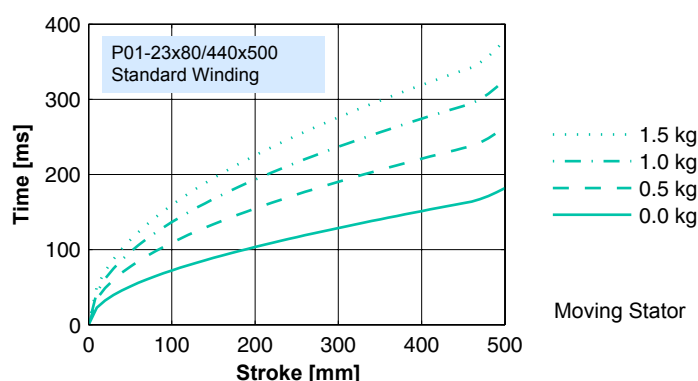
— E1100, 72VDC &
E1001, 72VDC
— E100, 48VDC

Dimensions in mm
*Cable Type

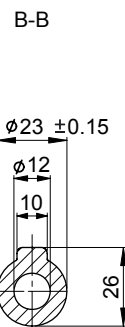
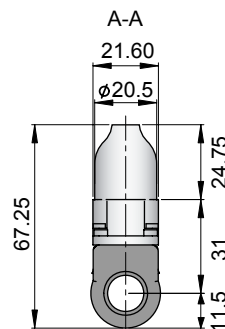
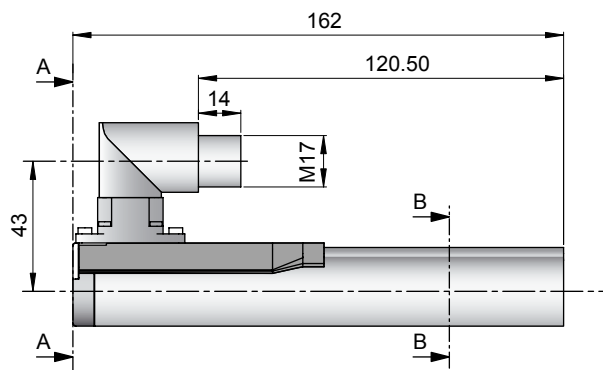
Motor Specification

P01-		Connector Type	Cable Type
		23x80/440x500-R	23x80/440x500 23x80/440x500-R20
Stroke Max.	mm (in)	500 (19.69)	500 (19.69)
Stroke SS	mm (in)	440 (17.32)	440 (17.32)
Peak Force E1100 / E1001	N (lbf)	44 (9.9)	44 (9.9)
Peak Force E100	N (lbf)	33 (7.4)	33 (7.4)
Cont. Force	N (lbf)	9 (2.0)	9 (2.0)
Cont. Force Fan cooling	N (lbf)	16 (3.7)	16 (3.7)
Border Force	%	63	63
Force Constant	N/A (lbf/A)	11.0 (2.48)	11.0 (2.48)
Max. Current @ 72VDC	A	4.0	4.0
Max. Current @ 48VDC	A	3.8	3.8
Max. Velocity @ 72VDC	m/s (in/s)	6.0 (236)	6.0 (236)
Max. Velocity @ 48VDC	m/s (in/s)	4.0 (157)	4.0 (157)
Phase Resist. 25/80 °C	Ohm	10.3/12.5	10.3/12.5
Phase Inductance	mH	1.4	1.4
Thermal Resistance	°K/W	7.0	7.0
Thermal Time Const.	sec	1600	1600
Stator Diameter	mm (in)	23 (0.91)	23 (0.91)
Stator Length	mm (in)	162 (6.38)	177 (6.97)
Stator Mass	g (lb)	265 (0.58)	265 (0.58)
Slider Diameter	mm (in)	12 (0.47)	12 (0.47)
Slider Length	mm (in)	580 (22.83)	580 (22.83)
Slider Mass	g (lb)	465 (1.03)	465 (1.03)
Position Repeatability	mm (in)	±0.05 (±0.0020)	±0.05 (±0.0020)
Linearity	%	±0.20	±0.20
Position Rep. with ES	mm (in)	±0.01 (±0.0004)	±0.01 (±0.0004)
Linearity with ES	mm (in)	±0.01 (±0.0004)	±0.01 (±0.0004)

Position-Time Diagram

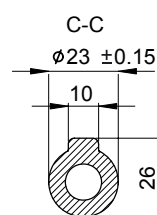
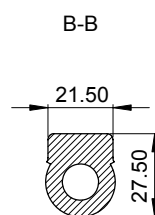
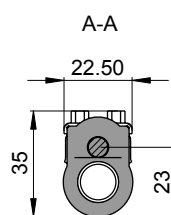
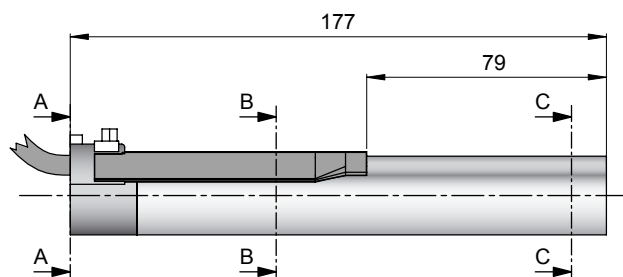


Connector Type



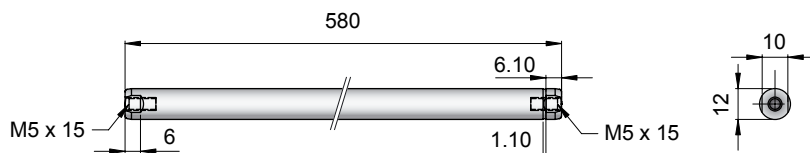
Linear Motor		Stator		Slider	
Type	Art.No	Type	Art. No.	Type	Art No.
P01-23x80/440x500-R	-->	PS01-23x80-R	0150-1233	& PL01-12x580/530	0150-1355

Cable Type



Linear Motor		Stator		Slider	
Type	Art.No	Type	Art. No.	Type	Art No.
P01-23x80/440x500	-->	PS01-23x80	0150-1201	& PL01-12x580/530	0150-1355
P01-23x80/440x500-R20	-->	PS01-23x80-R20	0150-1241	& PL01-12x580/530	0150-1355

Slider

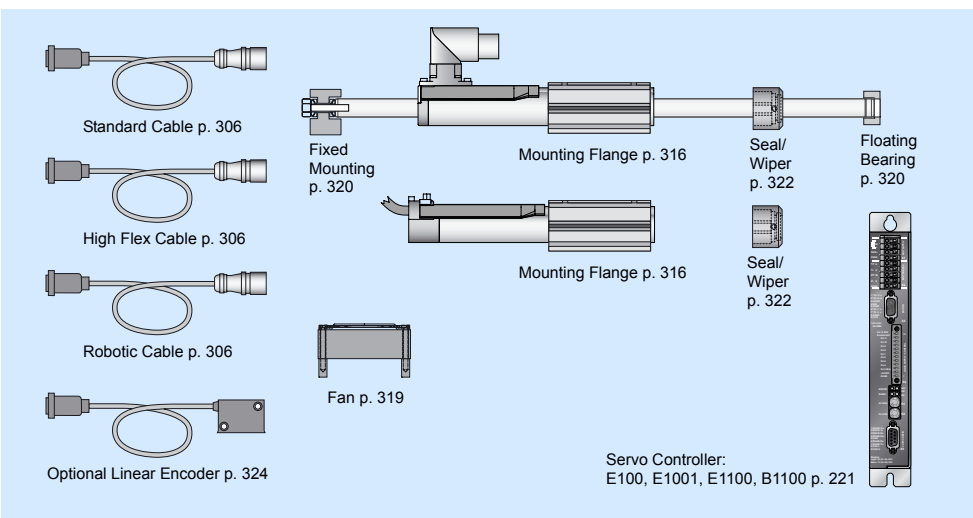


Standard Type	Slider Standard	PL01-12x580/530	0150-1355
Special Sliders	Heavy Duty Slider with WC/C-Coating	PL02-12x580/530	0150-1356
	Hollow Slider hole diameter 4.2mm	PL01-12x580/530-L	0150-1391

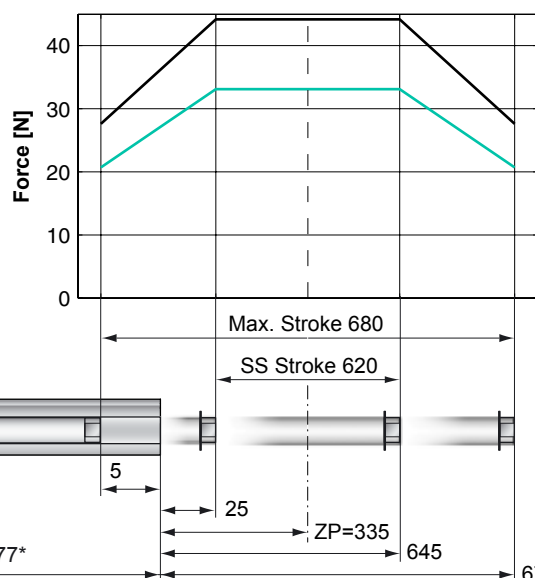
Connectors

Motor Connector Wiring		P01-23...-R		P01-23...-R20		P01-23...-R20	
Cable Length:		P01-23...-R		P01-23...-R20		P01-23...-R20	
P01-23x80/...x... 1.0m		P01-23...-R		P01-23...-R20		P01-23...-R20	
P01-23x80/...x...-R20 0.2m		P01-23...-R		P01-23...-R20		P01-23...-R20	
Ph 1+	red	1	1				
Ph 1-	pink	2	6				
Ph 2+	blue	3	2				
Ph 2-	grey	4	7				
+5VDC	white	A	3				
GND	inner Shield	B	8				
Sine	yellow	C	4				
Cosine	green	D	9				
Temp.	black	E	5				
Shield	outer Shield	Case	Case				

Accessoires



Max. Stroke: 680mm
Peak Force: 44N



Standard Winding:

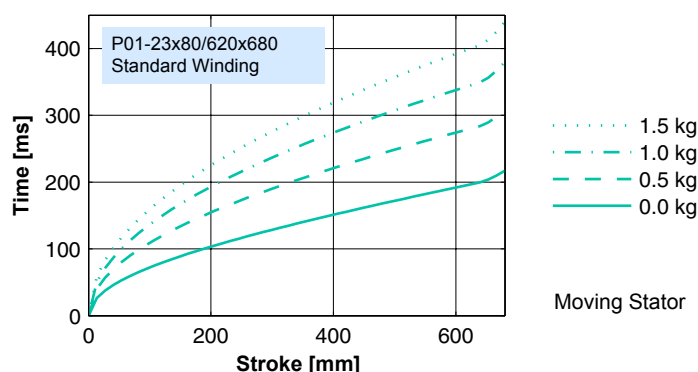
— E1100, 72VDC &
E1001, 72VDC
— E100, 48VDC

Dimensions in mm
*Cable Type

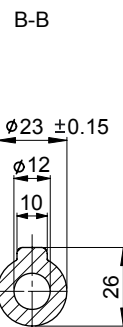
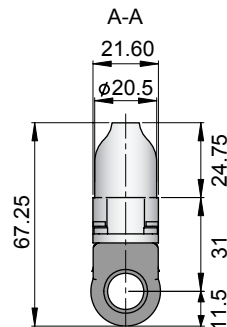
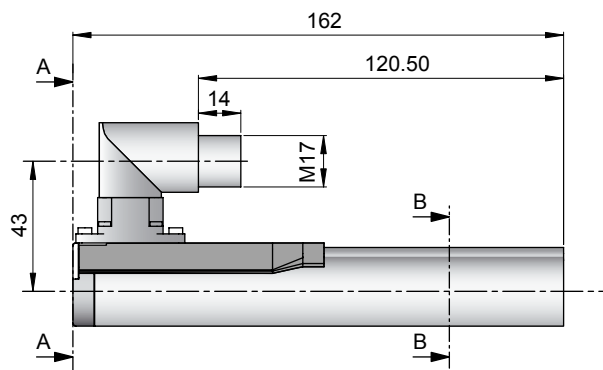
Motor Specification

P01-		Connector Type	Cable Type
		23x80/620x680-R	23x80/620x680 23x80/620x680-R20
Stroke Max.	mm (in)	680 (26.77)	680 (26.77)
Stroke SS	mm (in)	620 (24.41)	620 (24.41)
Peak Force E1100 / E1001	N (lbf)	44 (9.9)	44 (9.9)
Peak Force E100	N (lbf)	33 (7.4)	33 (7.4)
Cont. Force	N (lbf)	9 (2.0)	9 (2.0)
Cont. Force Fan cooling	N (lbf)	16 (3.7)	16 (3.7)
Border Force	%	63	63
Force Constant	N/A (lbf/A)	11.0 (2.48)	11.0 (2.48)
Max. Current @ 72VDC	A	4.0	4.0
Max. Current @ 48VDC	A	3.8	3.8
Max. Velocity @ 72VDC	m/s (in/s)	6.0 (236)	6.0 (236)
Max. Velocity @ 48VDC	m/s (in/s)	4.0 (157)	4.0 (157)
Phase Resist. 25/80 °C	Ohm	10.3/12.5	10.3/12.5
Phase Inductance	mH	1.4	1.4
Thermal Resistance	°K/W	7.0	7.0
Thermal Time Const.	sec	1600	1600
Stator Diameter	mm (in)	23 (0.91)	23 (0.91)
Stator Length	mm (in)	162 (6.38)	177 (6.97)
Stator Mass	g (lb)	265 (0.58)	265 (0.58)
Slider Diameter	mm (in)	12 (0.47)	12 (0.47)
Slider Length	mm (in)	760 (29.92)	760 (29.92)
Slider Mass	g (lb)	615 (1.36)	615 (1.36)
Position Repeatability	mm (in)	±0.05 (±0.0020)	±0.05 (±0.0020)
Linearity	%	±0.20	±0.20
Position Rep. with ES	mm (in)	±0.01 (±0.0004)	±0.01 (±0.0004)
Linearity with ES	mm (in)	±0.01 (±0.0004)	±0.01 (±0.0004)

Position-Time Diagram

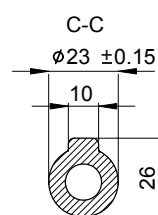
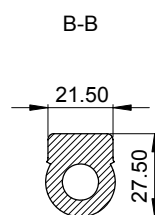
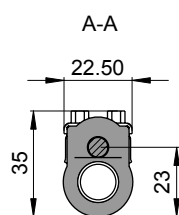
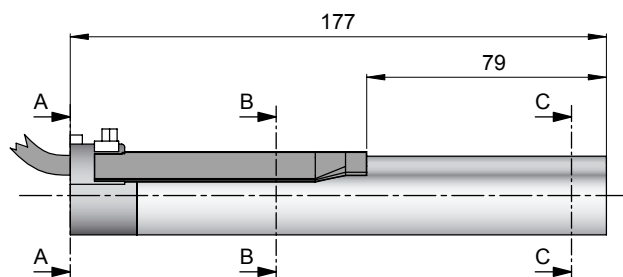


Connector Type



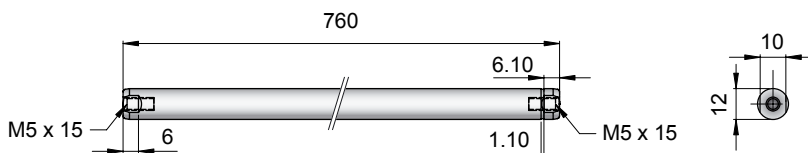
Linear Motor		Stator		Slider	
Type	Art.No	Type	Art. No.	Type	Art No.
P01-23x80/620x680-R	-->	PS01-23x80-R	0150-1233	& PL01-12x760/710	0150-1366

Cable Type



Linear Motor		Stator		Slider	
Type	Art.No	Type	Art. No.	Type	Art No.
P01-23x80/620x680	-->	PS01-23x80	0150-1201	& PL01-12x760/710	0150-1366
P01-23x80/620x680-R20	-->	PS01-23x80-R20	0150-1241	& PL01-12x760/710	0150-1366

Slider

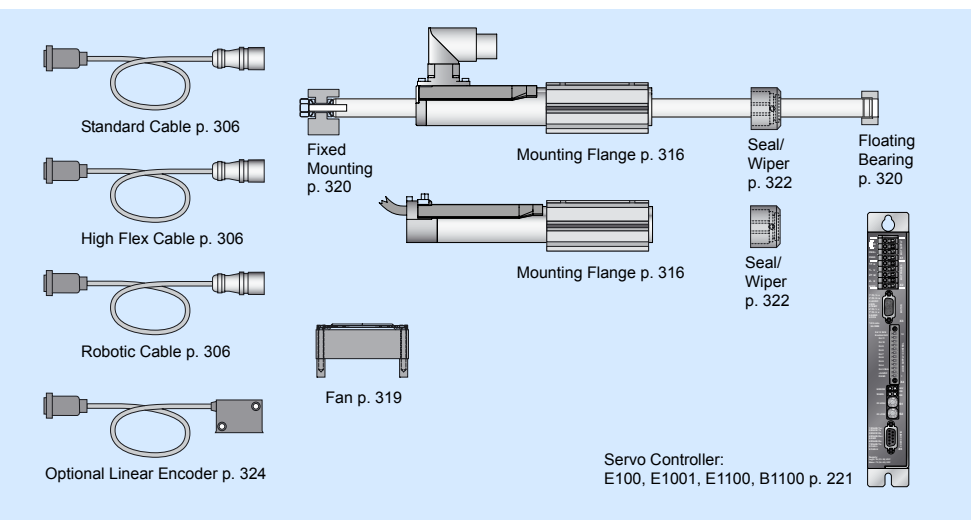


Standard Type	Slider Standard	PL01-12x760/710	0150-1366
Special Sliders	Heavy Duty Slider with WC/C-Coating	PL02-12x760/710	on request
	Hollow Slider hole diameter 4.2mm	PL01-12x760/710-L	0150-1392

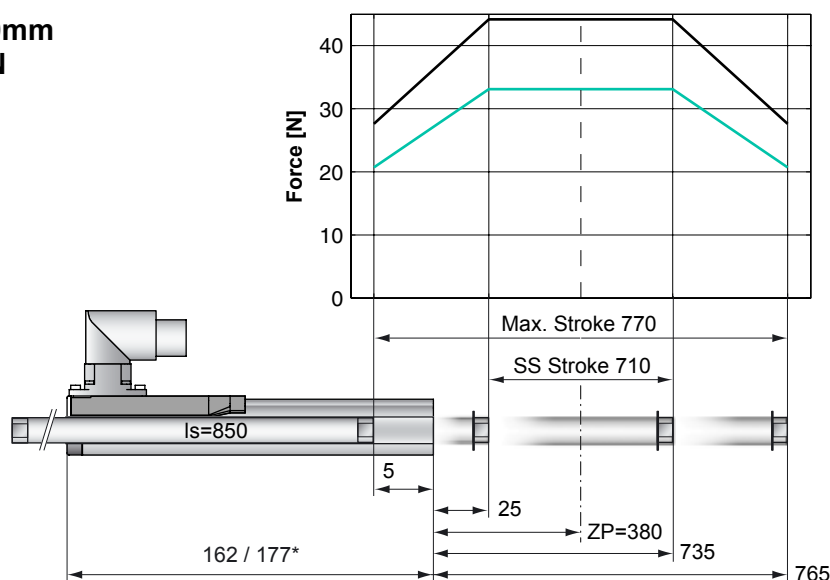
Connectors

Motor Connector Wiring		P01-23...-R P01-23...-R20		P01-23...
Cable Length: P01-23x80/...x... 1.0m P01-23x80/...x...-R20 0.2m				
Ph 1+	red	1	1	
Ph 1-	pink	2	6	
Ph 2+	blue	3	2	
Ph 2-	grey	4	7	
+5VDC	white	A	3	
GND	inner Shield	B	8	
Sine	yellow	C	4	
Cosine	green	D	9	
Temp.	black	E	5	
Shield	outer Shield	Case	Case	

Accessoires



Max. Stroke: 770mm
Peak Force: 44N



Standard Winding:

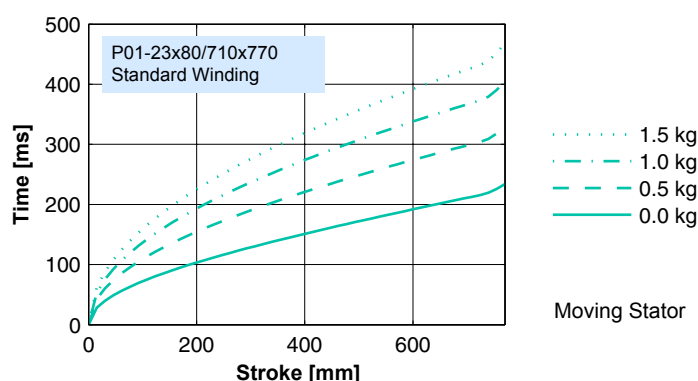
— E1100, 72VDC &
E1001, 72VDC
— E100, 48VDC

Dimensions in mm
*Cable Type

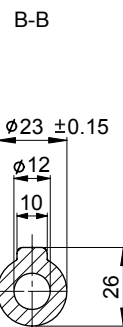
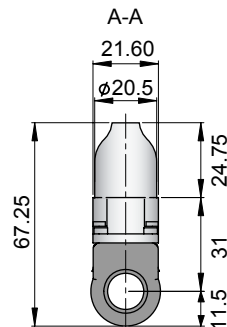
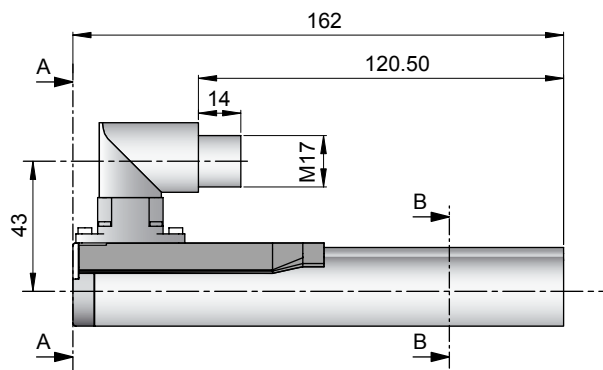
Motor Specification

P01-		Connector Type	Cable Type
		23x80/710x770-R	23x80/710x770 23x80/710x770-R20
Stroke Max.	mm (in)	770 (30.31)	770 (30.31)
Stroke SS	mm (in)	710 (27.95)	710 (27.95)
Peak Force E1100 / E1001	N (lbf)	44 (9.9)	44 (9.9)
Peak Force E100	N (lbf)	33 (7.4)	33 (7.4)
Cont. Force	N (lbf)	9 (2.0)	9 (2.0)
Cont. Force Fan cooling	N (lbf)	16 (3.7)	16 (3.7)
Border Force	%	63	63
Force Constant	N/A (lbf/A)	11.0 (2.48)	11.0 (2.48)
Max. Current @ 72VDC	A	4.0	4.0
Max. Current @ 48VDC	A	3.8	3.8
Max. Velocity @ 72VDC	m/s (in/s)	6.0 (236)	6.0 (236)
Max. Velocity @ 48VDC	m/s (in/s)	4.0 (157)	4.0 (157)
Phase Resist. 25/80 °C	Ohm	10.3/12.5	10.3/12.5
Phase Inductance	mH	1.4	1.4
Thermal Resistance	°K/W	7.0	7.0
Thermal Time Const.	sec	1600	1600
Stator Diameter	mm (in)	23 (0.91)	23 (0.91)
Stator Length	mm (in)	162 (6.38)	177 (6.97)
Stator Mass	g (lb)	265 (0.58)	265 (0.58)
Slider Diameter	mm (in)	12 (0.47)	12 (0.47)
Slider Length	mm (in)	850 (33.46)	850 (33.46)
Slider Mass	g (lb)	690 (1.52)	690 (1.52)
Position Repeatability	mm (in)	±0.05 (±0.0020)	±0.05 (±0.0020)
Linearity	%	±0.20	±0.20
Position Rep. with ES	mm (in)	±0.01 (±0.0004)	±0.01 (±0.0004)
Linearity with ES	mm (in)	±0.01 (±0.0004)	±0.01 (±0.0004)

Position-Time Diagram

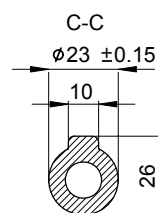
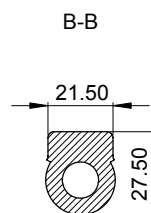
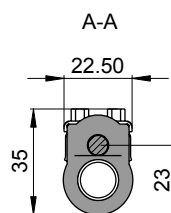
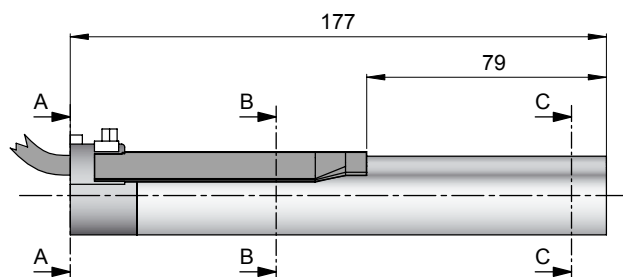


Connector Type



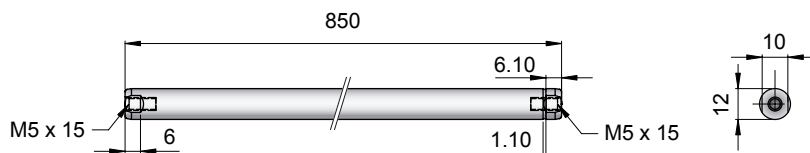
Linear Motor		Stator		Slider	
Type	Art.No	Type	Art. No.	Type	Art No.
P01-23x80/710x770-R	-->	PS01-23x80-R	0150-1233	& PL01-12x850/800	0150-1365

Cable Type



Linear Motor		Stator		Slider	
Type	Art.No	Type	Art. No.	Type	Art No.
P01-23x80/710x770	-->	PS01-23x80	0150-1201	& PL01-12x850/800	0150-1365
P01-23x80/710x770-R20	-->	PS01-23x80-R20	0150-1241	& PL01-12x850/800	0150-1365

Slider



Standard Type	Slider Standard	PL01-12x850/800	0150-1365
Special Sliders	Heavy Duty Slider with WC/C-Coating	PL02-12x850/800	on request
	Hollow Slider hole diameter 4.2mm	PL01-12x850/800-L	on request

Connectors

Motor Connector Wiring		P01-23...-R P01-23...-R20		P01-23...
Cable Length: P01-23x80/...x... 1.0m P01-23x80/...x...-R20 0.2m				
Ph 1+	red	1	1	
Ph 1-	pink	2	6	
Ph 2+	blue	3	2	
Ph 2-	grey	4	7	
+5VDC	white	A	3	
GND	inner Shield	B	8	
Sine	yellow	C	4	
Cosine	green	D	9	
Temp.	black	E	5	
Shield	outer Shield	Case	Case	

Accessoires

